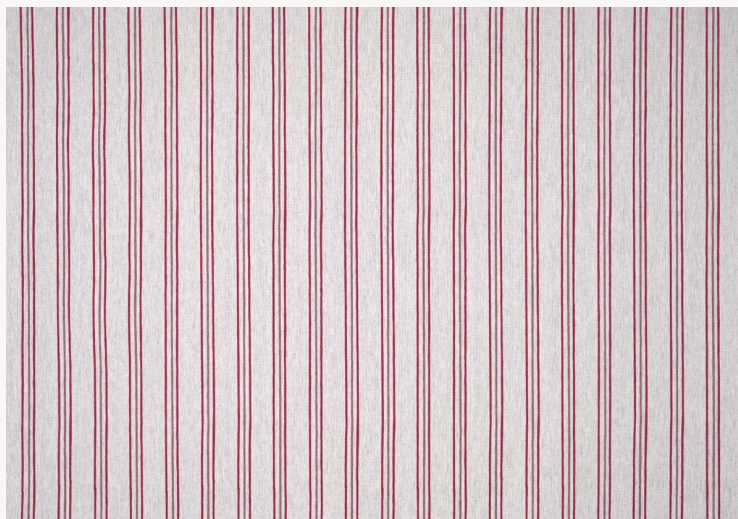


T0091003 PARK WALK STRIPE

The charm of a stripe that appears to be hand-painted.

T0091003 - Parma



Raccord : Horizontal 24 cm / 9.44 inch



Laize : 123,00 cm / 48,42 inch

Thorp of London

TYPE	Prints
TECHNIQUE	Screen printed by hand
SALES UNIT	Available per meter/yard
GROUND	TS015 - Margaret Off White
COMPOSITION	60 % Cotton - 40 % Hemp
NUMBER OF COLORS	2
COLORS	A-CRANBERRY 105 B-PARMA 108
DESIGN WIDTH	123 cm / 48,42 inch
REPEAT	H: 24 cm - 9,44 inch Straight repeat
WEIGHT	455 gr / ml
CARE	
INFORMATION	Hand screen printed

4 Colors



T0091001
Mustard



T0091002
Medici



T0091003
Parma



T0091004
Duck