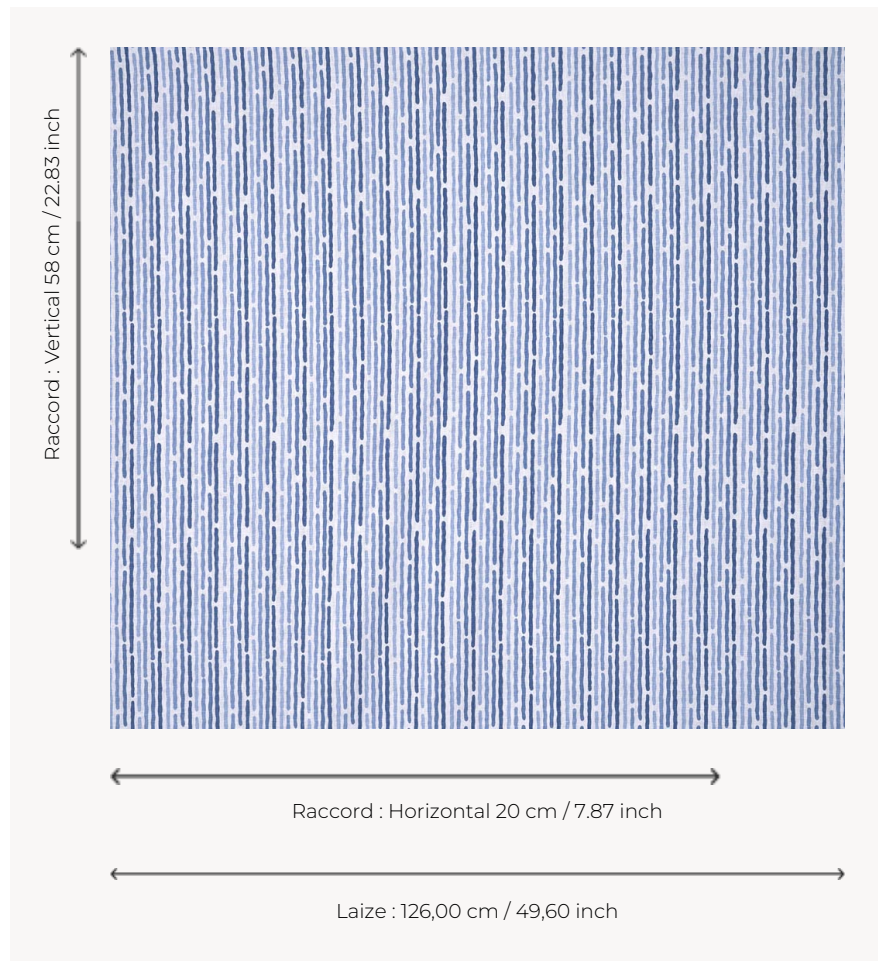


T0104002 BROKEN STRIPE

Sparkling and irregular, this fine stripe seems to have been drawn with a felt-tip pen.

T0104002 - China



Thorp of London

TYPE	Prints
TECHNIQUE	Screen printed by hand
USE	Moderate use
MARTINDALE	15.000 T
SALES UNIT	Available per meter/yard
GROUND	TS011 - John White
COMPOSITION	100 % Linen
NUMBER OF COLORS	4
COLORS	A-ATLANTIC 186 B-DELFT 394 C-CHINA 12 D-AQUATIC 397
DESIGN WIDTH	126 cm / 49,60 inch
REPEAT	H: 20 cm - 7,87 inch V: 58 cm - 22,83 inch Straight repeat
WEIGHT	308 gr / m
CARE	
INFORMATION	Hand screen printed

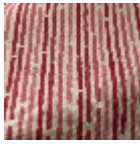
3 Colors



T0104001
Aubergine



T0104002
China



T0104003
Raspberry