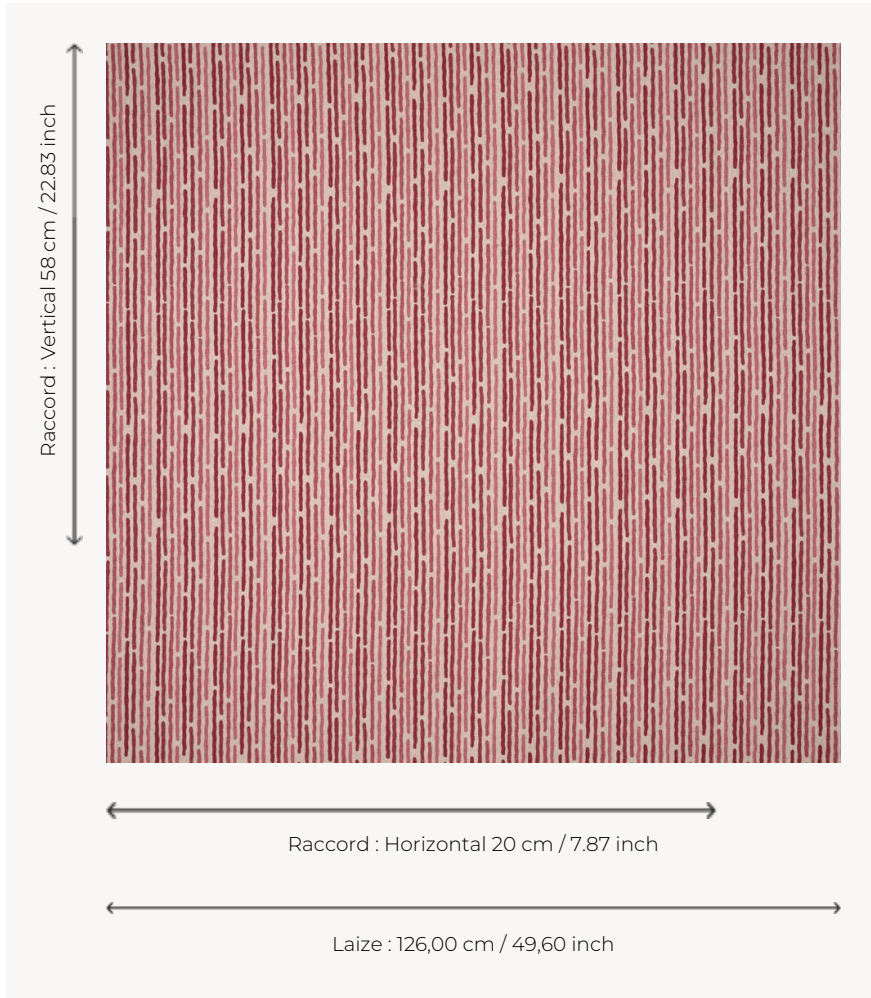


T0104003 BROKEN STRIPE

Sparkling and irregular, this fine stripe seems to have been drawn with a felt-tip pen.

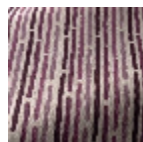
T0104003 - Raspberry



Thorp of London

TYPE	Prints
TECHNIQUE	Screen printed by hand
SALES UNIT	Available per meter/yard
GROUND	TS021 - Winston Natural
COMPOSITION	55 % Cotton - 45 % Jute
NUMBER OF COLORS	4
COLORS	A-STRAWBERRY 180 B-CALYPSO 57 C-RASPBERRY 38 D-LANTANA 486
DESIGN WIDTH	126 cm / 49,60 inch
REPEAT	H: 20 cm - 7,87 inch V: 58 cm - 22,83 inch Straight repeat
WEIGHT	449 gr / ml
CARE	
INFORMATION	Hand screen printed

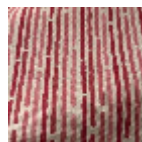
3 Colors



T0104001
Aubergine



T0104002
China



T0104003
Raspberry