


T0124002 PARISIENNE

Spectacular 18th-century Indian. The flat-frame technique reproduces all the subtleties of the original woodblock printing.

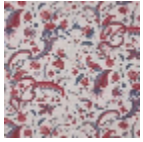
T0124002 - Matcha



Thorp of London

TYPE	Prints
TECHNIQUE	Screen printed by hand
SALES UNIT	Available per meter/yard
GROUND	TS016 - Marigold White
COMPOSITION	41 % Cotton - 27 % Linen - 18 % Bamboo viscose - 14 % Polyamide
NUMBER OF COLORS	6
COLORS	A-ELM 109 B-CALYPSO 57 C-CRANBERRY 105 D-RASPBERRY 38 E-MATCHA 111 F-LAUREL 136
DESIGN WIDTH	123 cm / 48,42 inch
REPEAT	H: 121 cm - 47,63 inch V: 75 cm - 29,52 inch Straight repeat
WEIGHT	377 gr / ml
CARE	
INFORMATION	Hand screen printed

3 Colors



T0124001
Niagara



T0124002
Matcha



T0124003
Reed