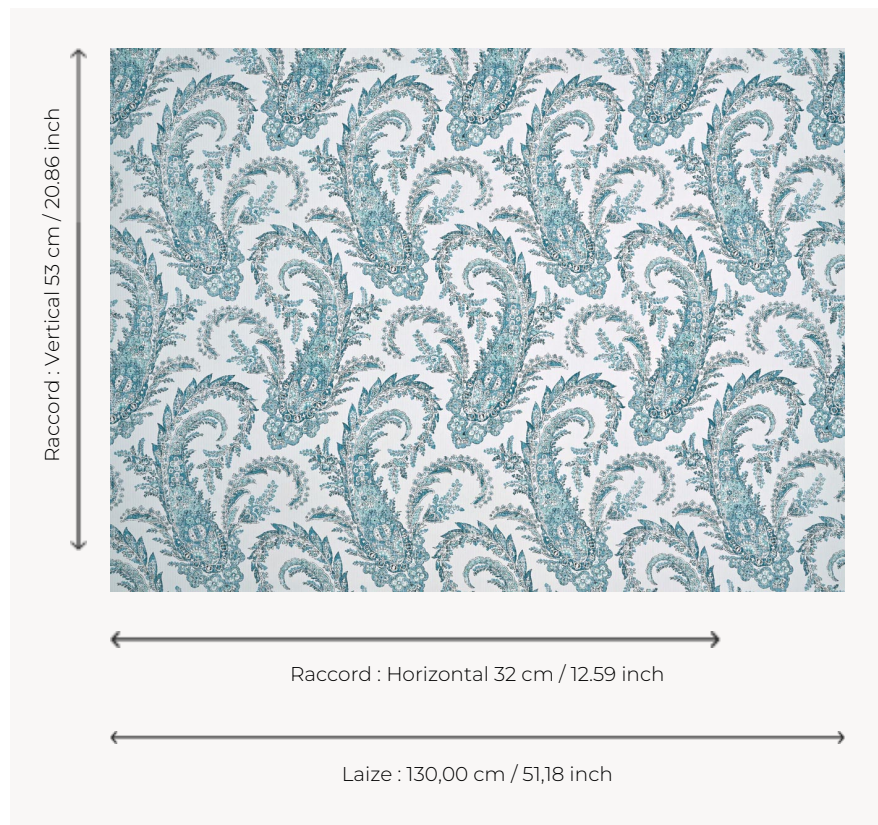


T0129003 PALME

PALME is inspired by the beautiful paisley pattern first adopted by English women in the second half of the 18th century.

T0129003 - Capri



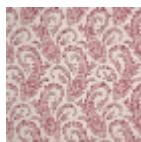
Thorp of London

TYPE	Prints
TECHNIQUE	Screen printed by hand
USE	Normal use
MARTINDALE	15.000 T
SALES UNIT	Available per meter/yard
GROUND	TS013 - Lucy Off White
COMPOSITION	100 % Cotton
NUMBER OF COLORS	6
COLORS	A-CHARCOAL 187 B-CARIBBEAN 88 C-ISLAND 383 D-AZURIN 485 E-DUCK 127 F-CAPRI 101
DESIGN WIDTH	130 cm / 51,18 inch
REPEAT	H: 32 cm - 12,59 inch V: 53 cm - 20,86 inch Straight repeat
WEIGHT	370 gr / ml
CARE	
INFORMATION	Hand screen printed

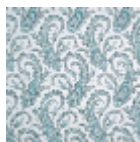
4 Colors



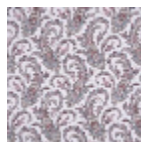
T0129001
Laurel



T0129002
Dahlia



T0129003
Capri



T0129004
Wine