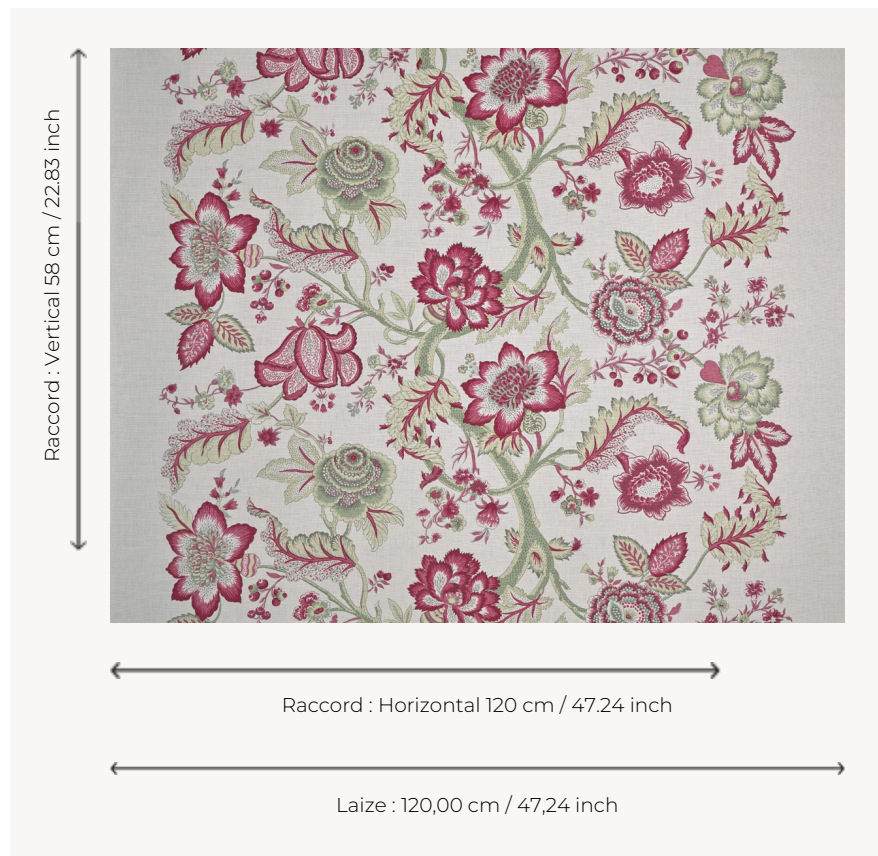


T0131001 SEVILLE

These sinuous flowering branches are inspired by the Indian palempores imported by the East India Companies in the 17th and 18th centuries.

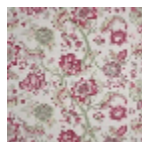
T0131001 - MAGNOLIA



Thorp of London

TYPE	Prints
TECHNIQUE	Screen printed by hand
SALES UNIT	Available per meter/yard
GROUND	TS018 - Spencer Off White
COMPOSITION	57 % Linen - 43 % Cotton
NUMBER OF COLORS	7
COLORS	A-METALLIC 58 B-MAGNOLIA 428 C-SCARLET 426 D-CELADON 221 E-WATERGREEN 205 F-CYCLAMEN 427 G-WATERGREEN 205
DESIGN WIDTH	120 cm / 47,24 inch
REPEAT	H: 120 cm - 47,24 inch V: 58 cm - 22,83 inch Straight repeat
WEIGHT	347 gr / ml
CARE	
INFORMATION	Hand screen printed

4 Colors



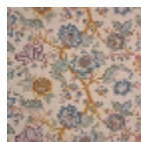
T0131001
MAGNOLIA



T0131002
Peon



T0131003
Melba



T0131004
Harvest