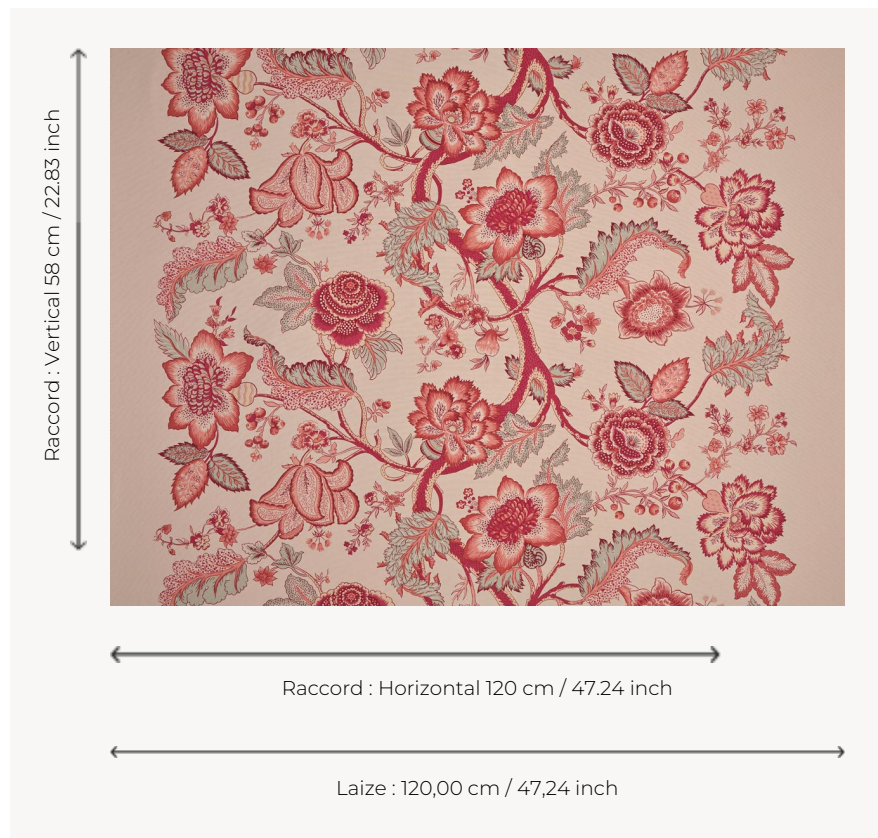


## T0131003 SEVILLE

These sinuous flowering branches are inspired by the Indian palempores imported by the East India Companies in the 17th and 18th centuries.

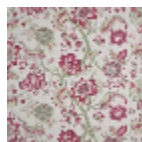
### T0131003 - Melba



### Thorp of London

<b>TYPE</b>	Prints
<b>TECHNIQUE</b>	Screen printed by hand
<b>USE</b>	Normal use
<b>MARTINDALE</b>	-
<b>SALES UNIT</b>	Available per meter/yard
<b>GROUND</b>	TS003 - Bradley Sand
<b>COMPOSITION</b>	-
<b>NUMBER OF COLORS</b>	7
<b>COLORS</b>	A-WINE 238 B-MELBA 421 C-CAMEO 227 D-LIPSTICK 425 E-ALASKA 363 F-MELON 375 G-CHAMPAGNE 142
<b>DESIGN WIDTH</b>	120 cm / 47,24 inch
<b>REPEAT</b>	H: 120 cm - 47,24 inch V: 58 cm - 22,83 inch Straight repeat
<b>WEIGHT</b>	361 gr / ml
<b>CARE</b>	
<b>INFORMATION</b>	Hand screen printed

## 4 Colors



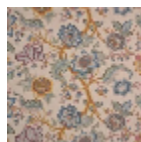
T0131001  
MAGNOLIA



T0131002  
Peon



T0131003  
Melba



T0131004  
Harvest