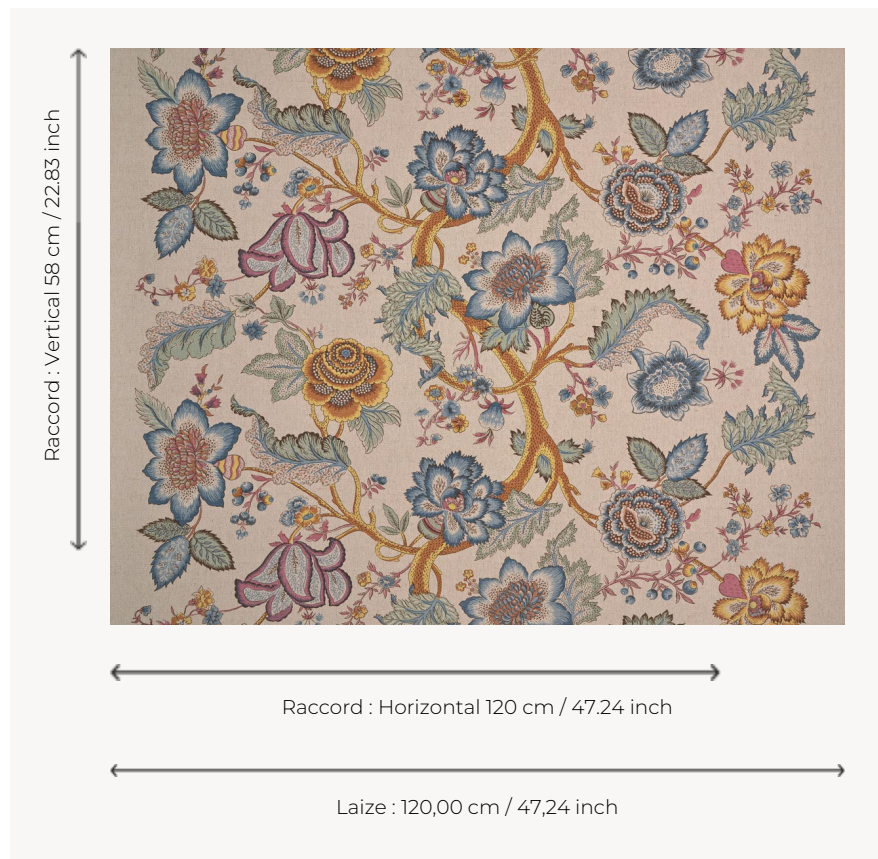


T0131004 SEVILLE

These sinuous flowering branches are inspired by the Indian palempores imported by the East India Companies in the 17th and 18th centuries.

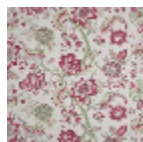
T0131004 - Harvest



Thorp of London

TYPE	Prints
TECHNIQUE	Screen printed by hand
SALES UNIT	Available per meter/yard
GROUND	TS021 - Winston Natural
COMPOSITION	55 % Cotton - 45 % Jute
NUMBER OF COLORS	7
COLORS	A-THATCH 14 B-BOUGAINVILLEA 410 C-MARY 433 D-CINNAMON 356 E-OPALINE 222 F-CELESTIAN 389 G-HARVEST 169
DESIGN WIDTH	120 cm / 47,24 inch
REPEAT	H: 120 cm - 47,24 inch V: 58 cm - 22,83 inch Straight repeat
WEIGHT	449 gr / ml
CARE	
INFORMATION	Hand screen printed

4 Colors



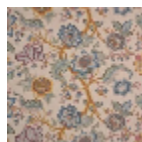
T0131001
MAGNOLIA



T0131002
Peon



T0131003
Melba



T0131004
Harvest