

T0138001 BALMORAL

The charm of English floral prints where natural flowers seem to wave in the wind.

T0138001 - Calypso



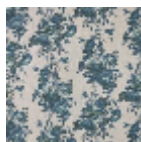
Thorp of London

TYPE	Prints
TECHNIQUE	Screen printed by hand
USE	Normal use
MARTINDALE	-
SALES UNIT	Available per meter/yard
GROUND	TS003 - Bradley Sand
COMPOSITION	100 % Cotton
NUMBER OF COLORS	7
COLORS	A-CACTUS 178 B-DAWN 207 C-CALYPSO 57 D-ELM 109 E-BERLINGOT 21 F-RASPBERRY 38 G-MATCHA 111
DESIGN WIDTH	124 cm / 48,81 inch
REPEAT	H: 121 cm - 47,63 inch V: 75 cm - 29,52 inch Straight repeat
WEIGHT	361 gr / ml
CARE	
INFORMATION	Hand screen printed

2 Colors



T0138001
Calypso



T0138002
Peon