

## T0138002 BALMORAL

The charm of English floral prints where natural flowers seem to wave in the wind.

### T0138002 - Peon



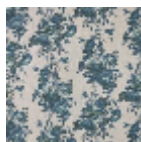
### Thorp of London

<b>TYPE</b>	Prints
<b>TECHNIQUE</b>	Screen printed by hand
<b>SALES UNIT</b>	Available per meter/yard
<b>GROUND</b>	TS008 - Harry Natural
<b>COMPOSITION</b>	100 % Linen
<b>NUMBER OF COLORS</b>	7
<b>COLORS</b>	A-HOLLY 71 B-CARIBBEAN 88 C-PEACOCK 126 D-MALACHITE 177 E-MOSAIC 208 F-DUCK 127 G-LICHEN 114
<b>DESIGN WIDTH</b>	124 cm / 48,81 inch
<b>REPEAT</b>	H: 121 cm - 47,63 inch V: 75 cm - 29,52 inch Straight repeat
<b>WEIGHT</b>	345 gr / ml
<b>CARE</b>	
<b>INFORMATION</b>	Hand screen printed

## 2 Colors



T0138001  
Calypso



T0138002  
Peon