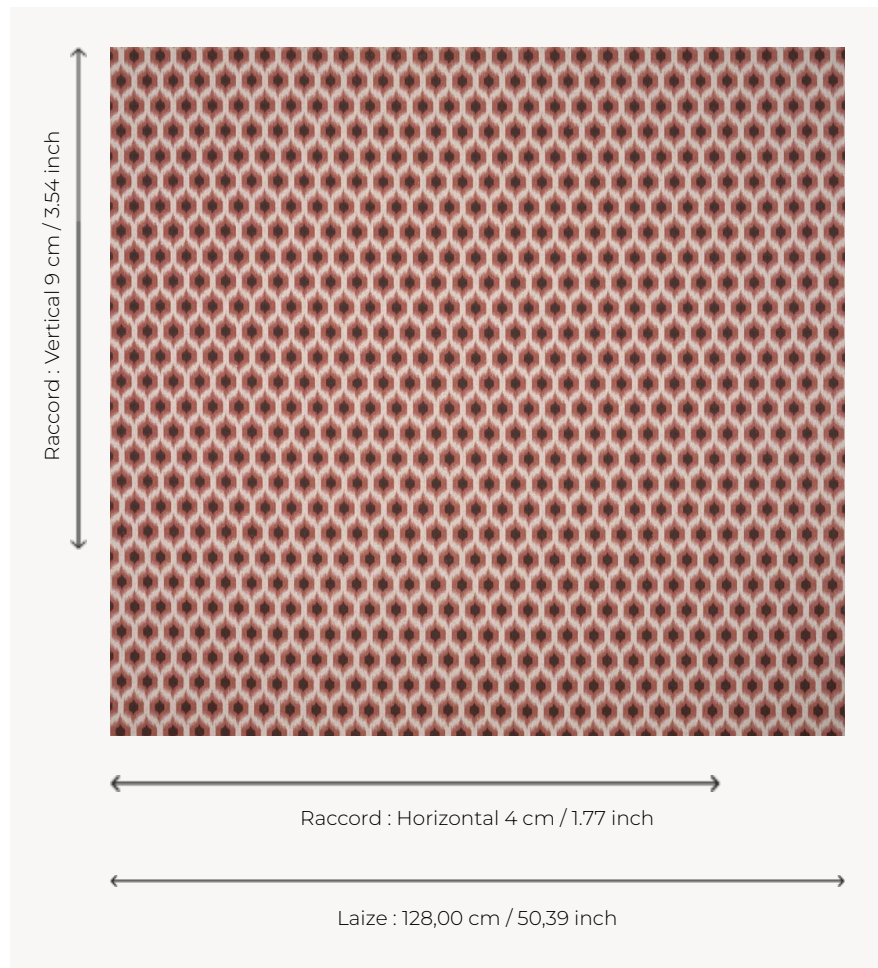


## T0214004 STELLAR

This pattern of small ikat rhombuses is a nod to decoration from the 70's, based on optical illusion.

### T0214004 - Cameo



### Thorp of London

<b>TYPE</b>	Prints
<b>TECHNIQUE</b>	Screen printed by hand
<b>SALES UNIT</b>	Available per meter/yard
<b>GROUND</b>	TS031 - Kathleen Twill Natural
<b>COMPOSITION</b>	70 % Cotton - 30 % Hemp
<b>NUMBER OF COLORS</b>	2
<b>COLORS</b>	A-WALNUT 176 B-CAMEO 227
<b>DESIGN WIDTH</b>	128 cm / 50,39 inch
<b>REPEAT</b>	H: 4 cm - 1,77 inch V: 9 cm - 3,54 inch Straight repeat
<b>WEIGHT</b>	549 gr / ml
<b>CARE</b>	
<b>INFORMATION</b>	Hand screen printed

## 4 Colors



T0214001  
Anvers



T0214002  
Atlantic



T0214003  
Marble



T0214004  
Cameo