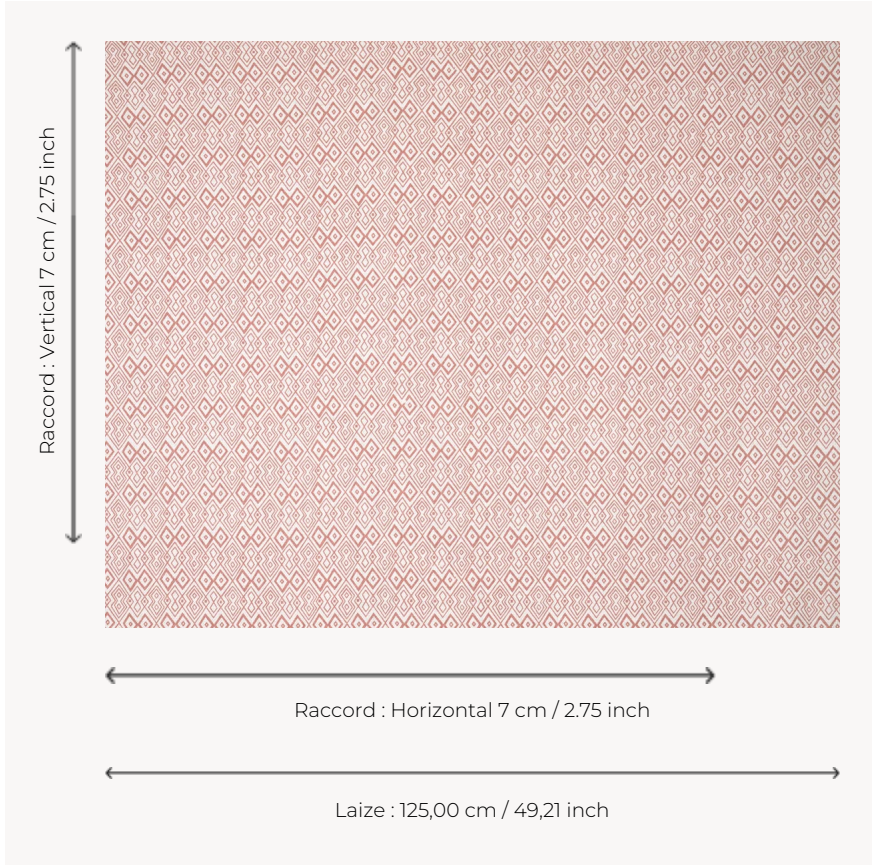


T0277001 AVENUE THORP

AVENUE THORP is an all-over pattern of interlocking diamonds. It is reminiscent of African raffia embroideries.

T0277001 - Powder



Thorp of London

TYPE	Prints
TECHNIQUE	Screen printed by hand
SALES UNIT	Available per meter/yard
GROUND	TS004 - Douglas White
COMPOSITION	78 % Linen - 22 % Bamboo viscose
NUMBER OF COLORS	1
COLORS	A-POWDER 229
DESIGN WIDTH	125 cm / 49,21 inch
REPEAT	H: 7 cm - 2,75 inch V: 7 cm - 2,75 inch Straight repeat
WEIGHT	436 gr / ml
CARE	
INFORMATION	Hand screen printed

3 Colors



T0277001
Powder



T0277002
Spruce



T0277003
Black