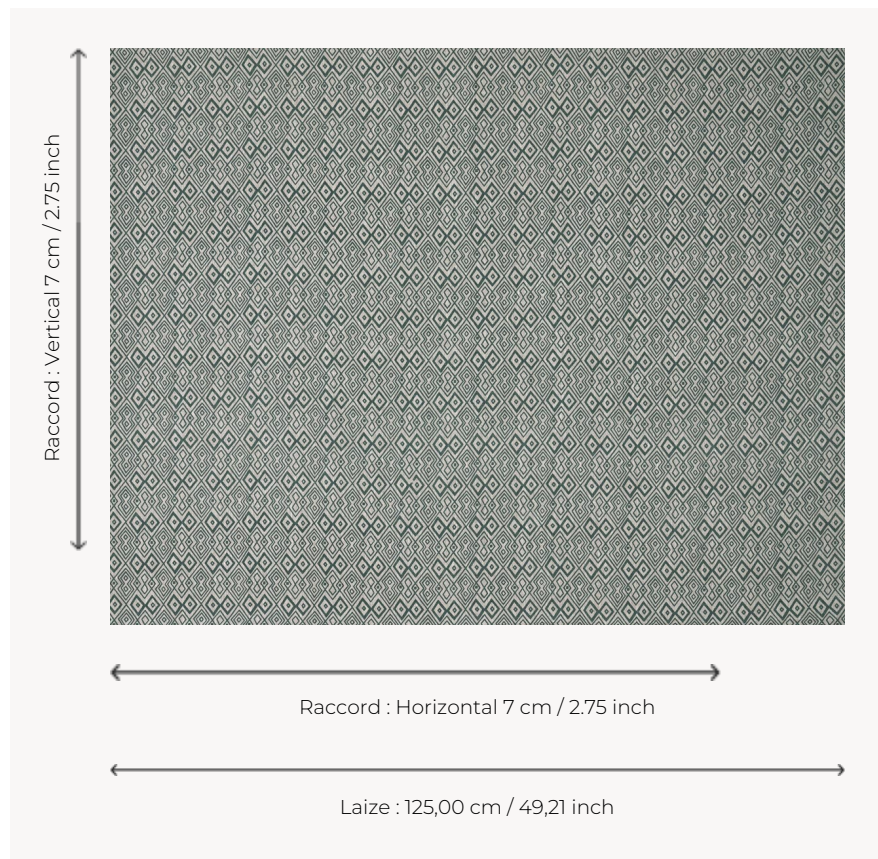


## T0277002 AVENUE THORP

AVENUE THORP is an all-over pattern of interlocking diamonds. It is reminiscent of African raffia embroideries.

### T0277002 - Spruce



### Thorp of London

<b>TYPE</b>	Prints
<b>TECHNIQUE</b>	Screen printed by hand
<b>SALES UNIT</b>	Available per meter/yard
<b>GROUND</b>	TS008 - Harry Natural
<b>COMPOSITION</b>	100 % Linen
<b>NUMBER OF COLORS</b>	1
<b>COLORS</b>	A-SPRUCE 342
<b>DESIGN WIDTH</b>	125 cm / 49,21 inch
<b>REPEAT</b>	H: 7 cm - 2,75 inch V: 7 cm - 2,75 inch Straight repeat
<b>WEIGHT</b>	345 gr / ml
<b>CARE</b>	
<b>INFORMATION</b>	Hand screen printed

### 3 Colors



T0277001  
Powder



T0277002  
Spruce



T0277003  
Black