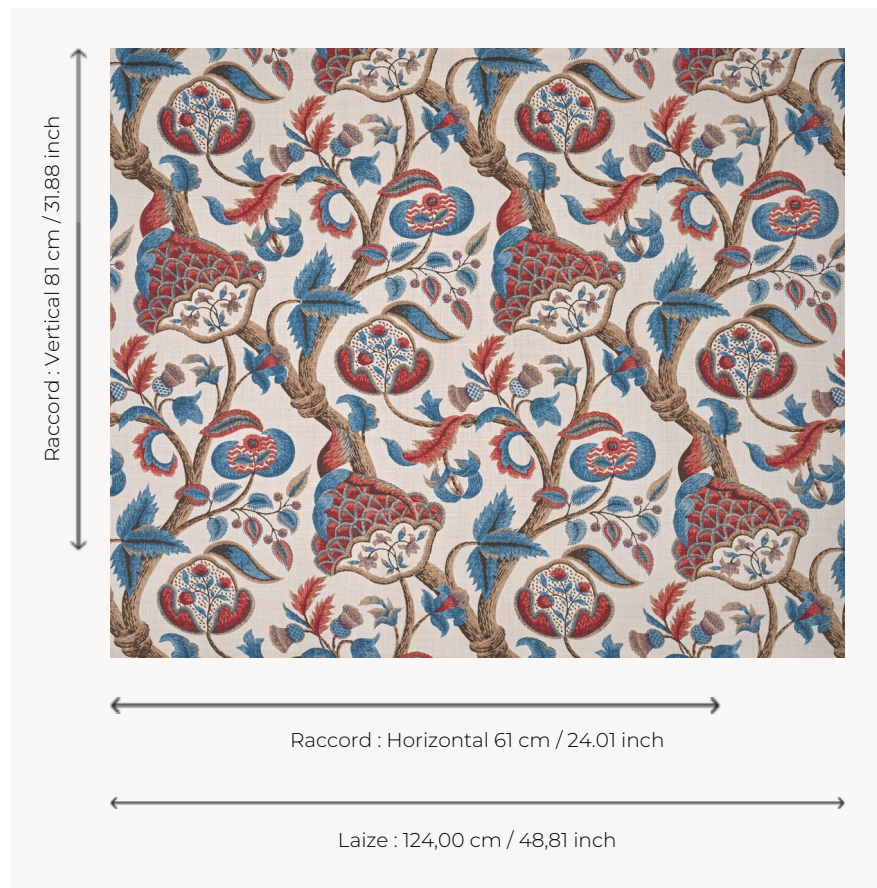


T0291002 EDINBURGH

This magnificent motif of sinuous flowering branches is a trompe-l'œil reproduction of the spectacular Crewel embroideries from the 17th English century.

T0291002 - Olympe



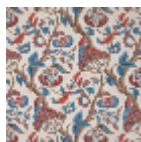
Thorp of London

TYPE	Prints
TECHNIQUE	Screen printed by hand
SALES UNIT	Available per meter/yard
GROUND	TS007 - George Off White
COMPOSITION	100 % Linen
NUMBER OF COLORS	10
COLORS	A-ESPRESSO 407 B-PEACOCK 126 C-MULBERRY 232 D-POMPEII 163 E-OLYMPE 384 F-WISTERIA 286 G-MOSAIC 208 H-PUTTY 93 I-CANYON 260 J-CHANTERELLE 161
DESIGN WIDTH	124 cm / 48,81 inch
REPEAT	H: 61 cm - 24,01 inch V: 81 cm - 31,88 inch Straight repeat
WEIGHT	685 gr / ml
CARE	
INFORMATION	Hand screen printed

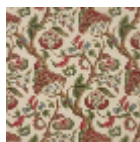
3 Colors



T0291001
Malachite



T0291002
Olympe



T0291003
Cranberry