

T0291003 EDINBURGH

This magnificent motif of sinuous flowering branches is a trompe-l'œil reproduction of the spectacular Crewel embroideries from the 17th English century.

T0291003 - Cranberry



Raccord : Horizontal 61 cm / 24.01 inch

Laize : 124,00 cm / 48,81 inch

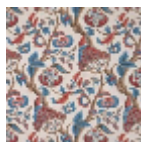
Thorp of London

TYPE	Prints
TECHNIQUE	Screen printed by hand
SALES UNIT	Available per meter/yard
GROUND	TS021 - Winston Natural
COMPOSITION	55 % Cotton - 45 % Jute
NUMBER OF COLORS	10
COLORS	A-PEPPER 379 B-LAUREL 136 C-PEACOCK 126 D-CRANBERRY 105 E-ELM 109 F-MOSAIC 208 G-MATCHA 111 H-SAND 216 I-CALYPSO 57 J-SIENNA 209
DESIGN WIDTH	124 cm / 48,81 inch
REPEAT	H: 61 cm - 24,01 inch V: 81 cm - 31,88 inch Straight repeat
WEIGHT	449 gr / ml
CARE	
INFORMATION	Hand screen printed

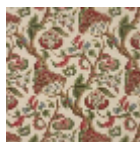
3 Colors



T0291001
Malachite



T0291002
Olympe



T0291003
Cranberry