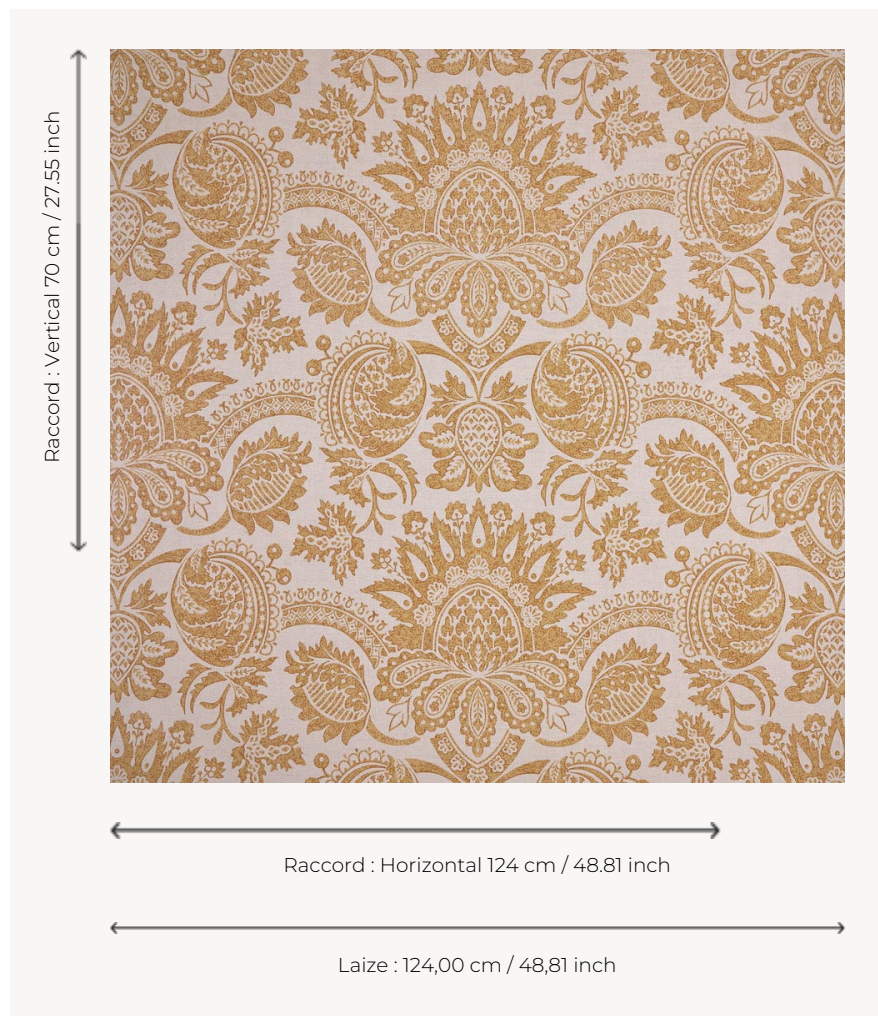


T0296001 ST PETERS

ST PETERS fabric is a magnificent reinterpretation of "Indian porcelain" (18th-century terminology for indigo woodblock prints). A direct reference to imported blue-and-white Chinese porcelain, this textile is also inspired by the baroque silks of the 1730s, with their motifs of large flowers and serrated leaves.

T0296001 - Brass



Thorp of London

TYPE	Prints
TECHNIQUE	Screen printed by hand
SALES UNIT	Available per meter/yard
GROUND	TS001 - Andrew Natural
COMPOSITION	60 % Cotton - 40 % Jute
NUMBER OF COLORS	2
COLORS	A-BRASS 158 B-WHEAT 254
DESIGN WIDTH	124 cm / 48,81 inch
REPEAT	H: 124 cm - 48,81 inch V: 70 cm - 27,55 inch Straight repeat
WEIGHT	542 gr / ml
CARE	
INFORMATION	Hand screen printed

4 Colors



T0296001
Brass



T0296002
Jay



T0296003
Current



T0296004
Plum