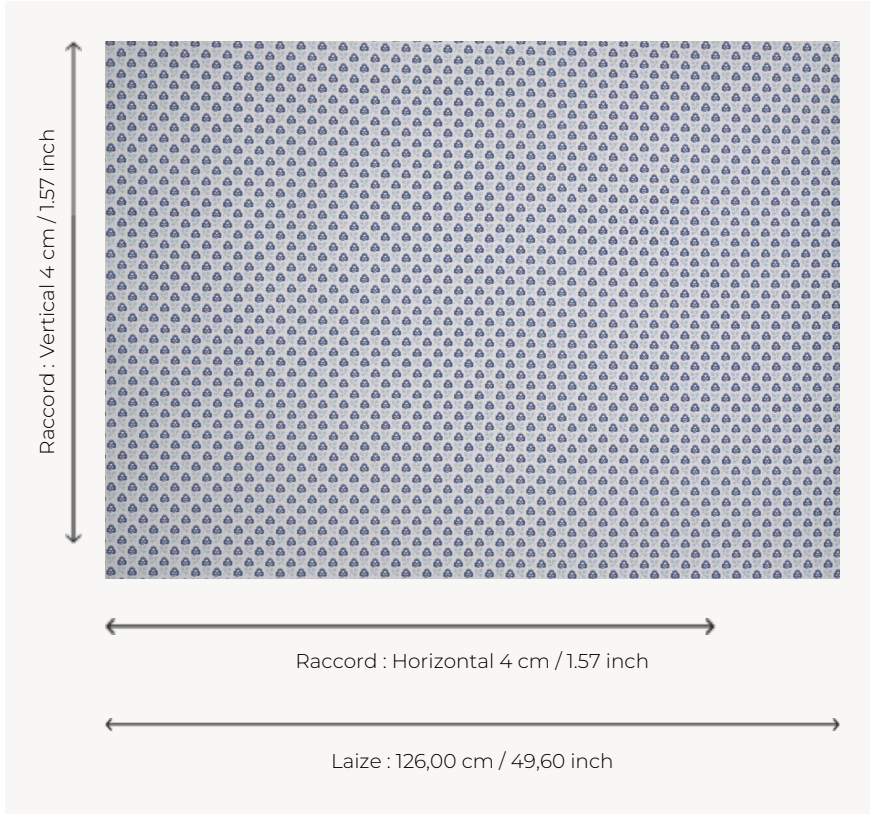


T0298002 CHALFONT

Charming floral sowing in the spirit of late 18th-century mignonettes used in fashion.

T0298002 - China

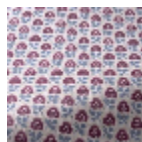


Thorp of London

TYPE	Prints
TECHNIQUE	Screen printed by hand
USE	Normal use
MARTINDALE	15.000 T
SALES UNIT	Available per meter/yard
GROUND	TS013 - Lucy Off White
COMPOSITION	100 % Cotton
NUMBER OF COLORS	3
COLORS	A-FOAM 135 B-MINERAL 297 C-CHINA 12
DESIGN WIDTH	126 cm / 49,60 inch
REPEAT	H: 4 cm - 1,57 inch V: 4 cm - 1,57 inch Straight repeat
WEIGHT	370 gr / ml
CARE	

INFORMATION Hand screen printed

3 Colors



T0298001
Petunia



T0298002
China



T0298003
Argile