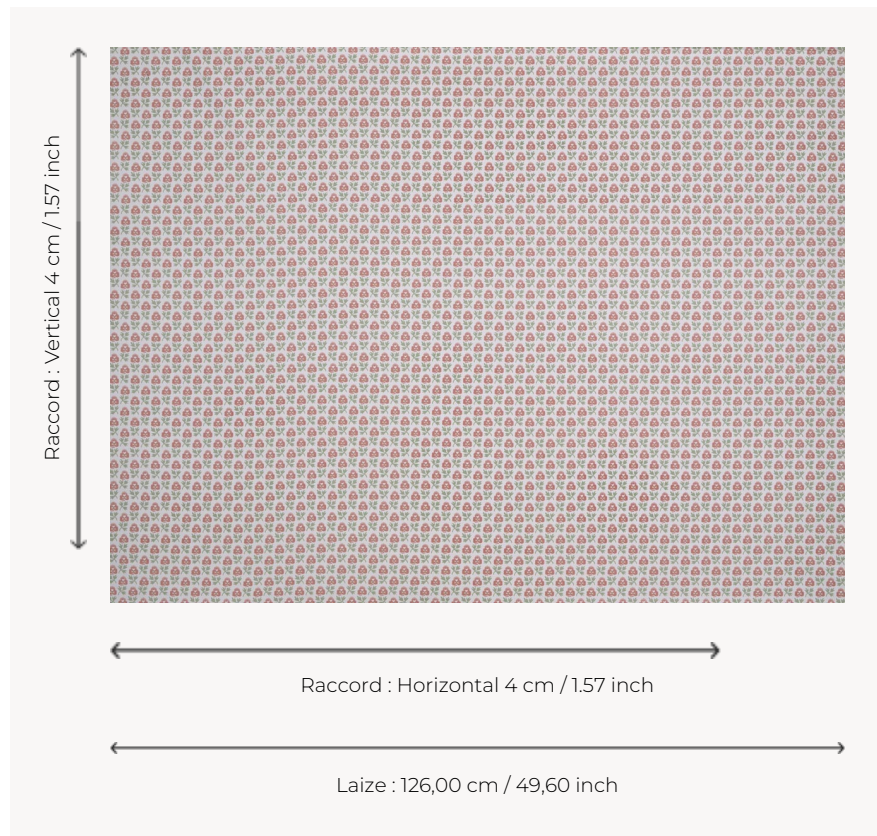


T0298003 CHALFONT

Charming floral sowing in the spirit of late 18th-century mignonettes used in fashion.

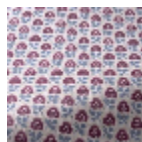
T0298003 - Argile



Thorp of London

TYPE	Prints
TECHNIQUE	Screen printed by hand
SALES UNIT	Available per meter/yard
GROUND	TS020 - William White
COMPOSITION	100 % Cotton
NUMBER OF COLORS	3
COLORS	A-MARBLE 94 B-SEAWEED 436 C-ARGILE 67
DESIGN WIDTH	126 cm / 49,60 inch
REPEAT	H: 4 cm - 1,57 inch V: 4 cm - 1,57 inch Straight repeat
WEIGHT	292 gr / ml
CARE	
INFORMATION	Hand screen printed

3 Colors



T0298001
Petunia



T0298002
China



T0298003
Argile