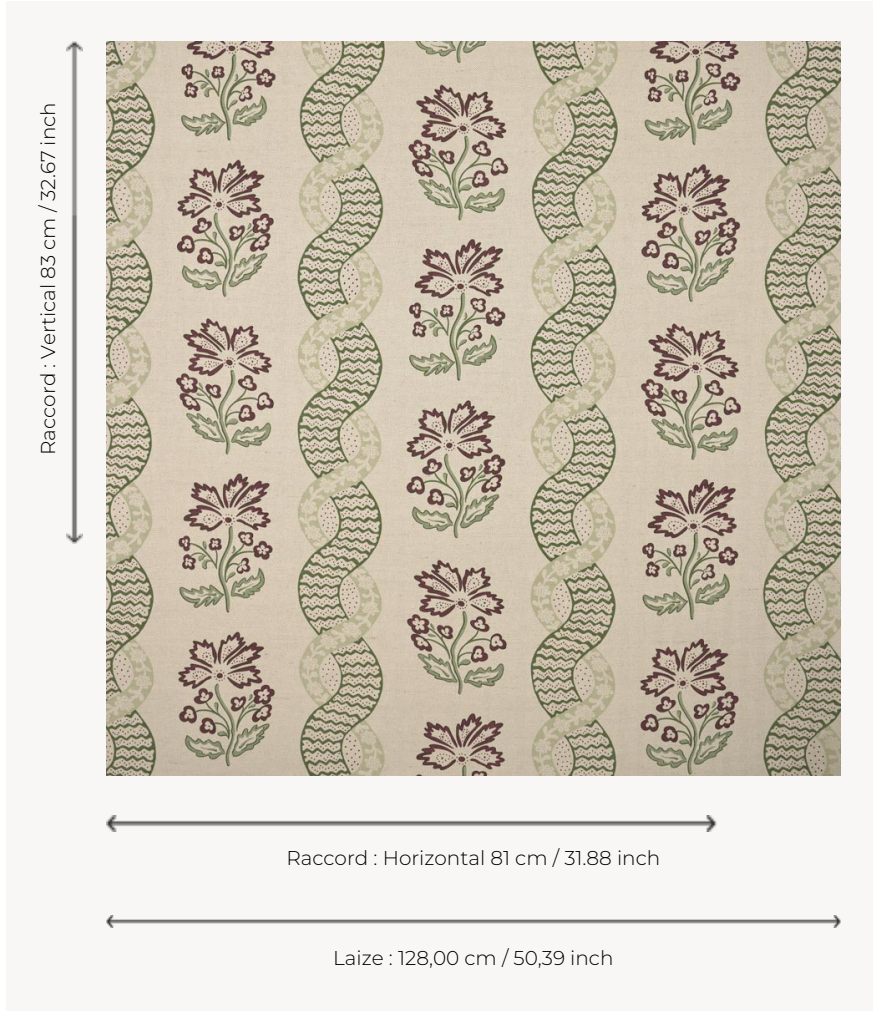


T0315001 CAVALERE

Inspired by the printed canvases from the second half of the 18th century, CAVALERE features spiral ribbon effects and stylized flowers.

T0315001 - Fig



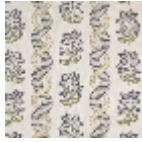
Thorp of London

TYPE	Prints
TECHNIQUE	Screen printed by hand
SALES UNIT	Available per meter/yard
GROUND	TS001 - Andrew Natural
COMPOSITION	60 % Cotton - 40 % Jute
NUMBER OF COLORS	4
COLORS	A-RUSH 200 B-FIG 233 C-SHAMROCK 495 D-CIVET 360
DESIGN WIDTH	128 cm / 50,39 inch
REPEAT	H: 81 cm - 31,88 inch V: 83 cm - 32,67 inch Half drop repeat
WEIGHT	542 gr / ml
CARE	
INFORMATION	Hand screen printed

3 Colors



T0315001
Fig



T0315002
Storm



T0315003
Cameo