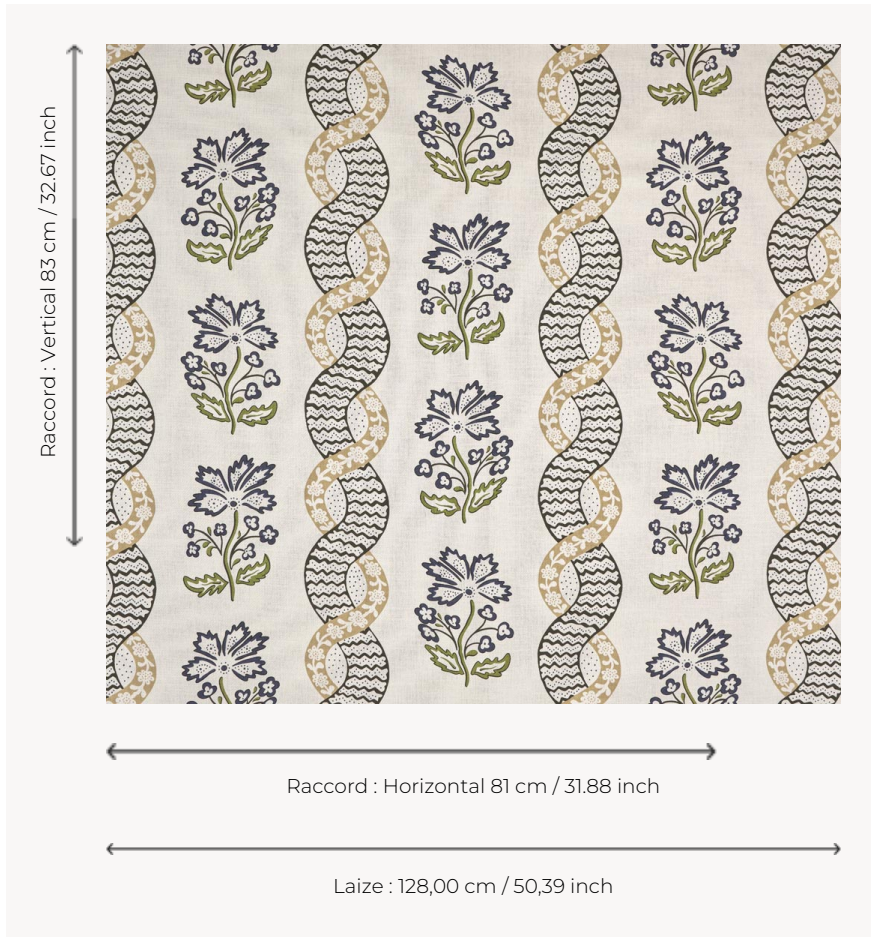


T0315002 CAVALERE

Inspired by the printed canvases from the second half of the 18th century, CAVALERE features spiral ribbon effects and stylized flowers.

T0315002 - Storm



Thorp of London

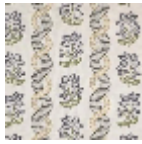
TYPE	Prints
TECHNIQUE	Screen printed by hand
SALES UNIT	Available per meter/yard
GROUND	TS004 - Douglas White
COMPOSITION	78 % Linen - 22 % Bamboo viscose
NUMBER OF COLORS	4
COLORS	A-IVY 179 B-STORM 212 C-CEDAR 50 D-SAND 216
DESIGN WIDTH	128 cm / 50,39 inch
REPEAT	H: 81 cm - 31,88 inch V: 83 cm - 32,67 inch Half drop repeat
WEIGHT	436 gr / ml
CARE	
INFORMATION	Hand screen printed

3 Colors



T0315001

Fig



T0315002

Storm



T0315003

Cameo