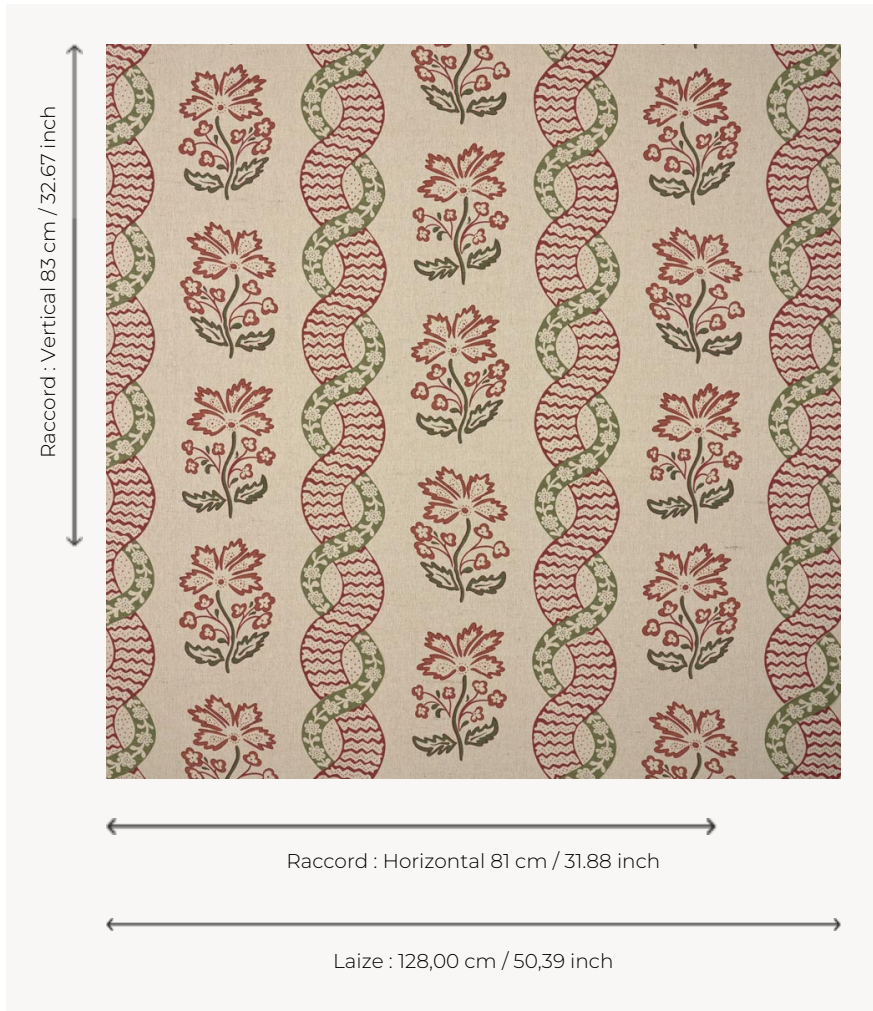



T0315003 CAVALERE

Inspired by the printed canvases from the second half of the 18th century, CAVALERE features spiral ribbon effects and stylized flowers.

T0315003 - Cameo



Thorp of London

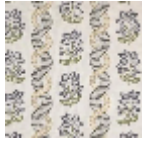
TYPE	Prints
TECHNIQUE	Screen printed by hand
SALES UNIT	Available per meter/yard
GROUND	TS021 - Winston Natural
COMPOSITION	55 % Cotton - 45 % Jute
NUMBER OF COLORS	4
COLORS	A-STRAWBERRY 180 B-CAMEO 227 C-CACTUS 178 D-ELM 109
DESIGN WIDTH	128 cm / 50,39 inch
REPEAT	H: 81 cm - 31,88 inch V: 83 cm - 32,67 inch Half drop repeat
WEIGHT	449 gr / ml
CARE	
INFORMATION	Hand screen printed

3 Colors



T0315001

Fig



T0315002

Storm



T0315003

Cameo