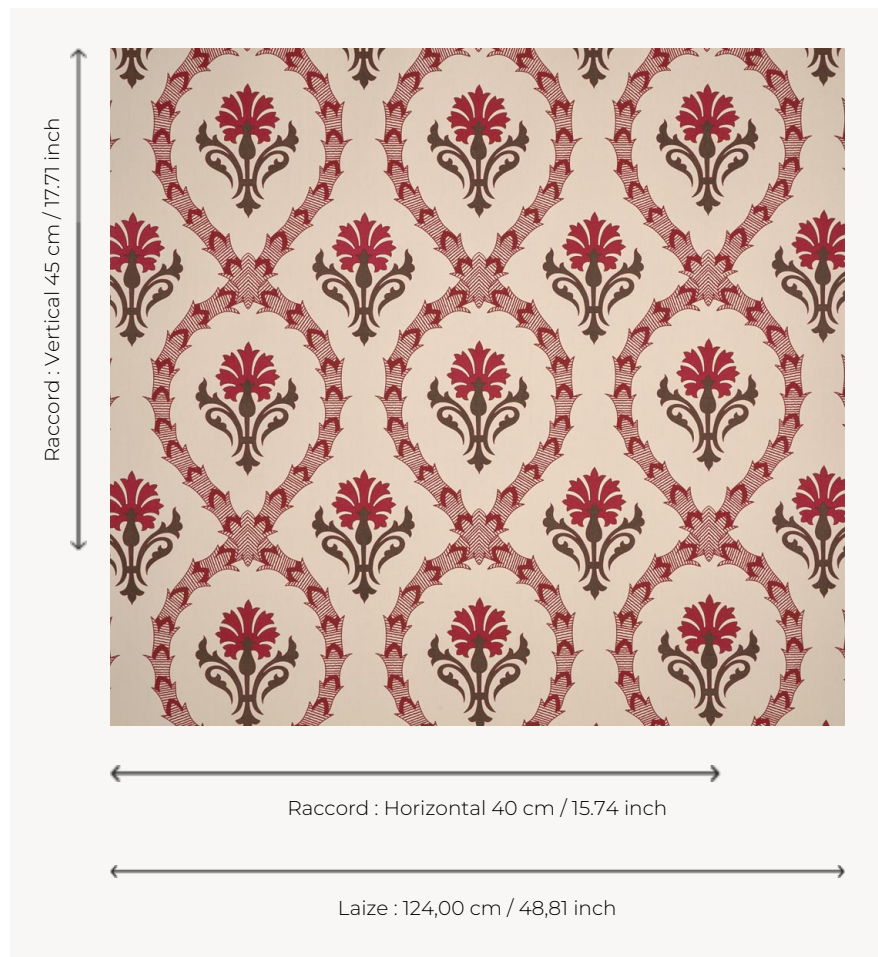


## T0316002 CRUSADE

This pattern of stylized carnations set in staggered mandorls is a nod to the Arts and Crafts movement.

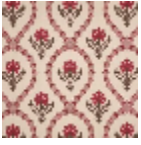
### T0316002 - Claret



### Thorp of London

<b>TYPE</b>	Prints
<b>TECHNIQUE</b>	Screen printed by hand
<b>USE</b>	Normal use
<b>MARTINDALE</b>	-
<b>SALES UNIT</b>	Available per meter/yard
<b>GROUND</b>	TS003 - Bradley Sand
<b>COMPOSITION</b>	100 % Cotton
<b>NUMBER OF COLORS</b>	4
<b>COLORS</b>	A-CLARET 122 B-RASPBERRY 38 C-MINK 80 D-CLARET 122
<b>DESIGN WIDTH</b>	124 cm / 48,81 inch
<b>REPEAT</b>	H: 40 cm - 15,74 inch V: 45 cm - 17,71 inch Straight repeat
<b>WEIGHT</b>	361 gr / ml
<b>CARE</b>	
<b>INFORMATION</b>	Hand screen printed

## 2 Colors



T0316002  
Claret



T0316003  
Aubergine