

T0316003 CRUSADE

This pattern of stylized carnations set in staggered mandorls is a nod to the Arts and Crafts movement.

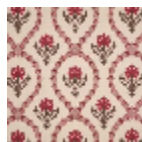
T0316003 - Aubergine



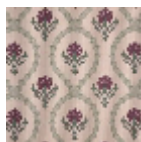
Thorp of London

TYPE	Prints
TECHNIQUE	Screen printed by hand
SALES UNIT	Available per meter/yard
GROUND	TS019 - Stanley Natural
COMPOSITION	62 % Cotton - 38 % Jute
NUMBER OF COLORS	4
COLORS	A-AUBERGINE 129 B-PETUNIA 130 C-LICHEN 114 D-CELADON 221
DESIGN WIDTH	124 cm / 48,81 inch
REPEAT	H: 40 cm - 15,74 inch V: 45 cm - 17,71 inch Straight repeat
WEIGHT	542 gr / ml
CARE	
INFORMATION	Hand screen printed

2 Colors



T0316002
Claret



T0316003
Aubergine