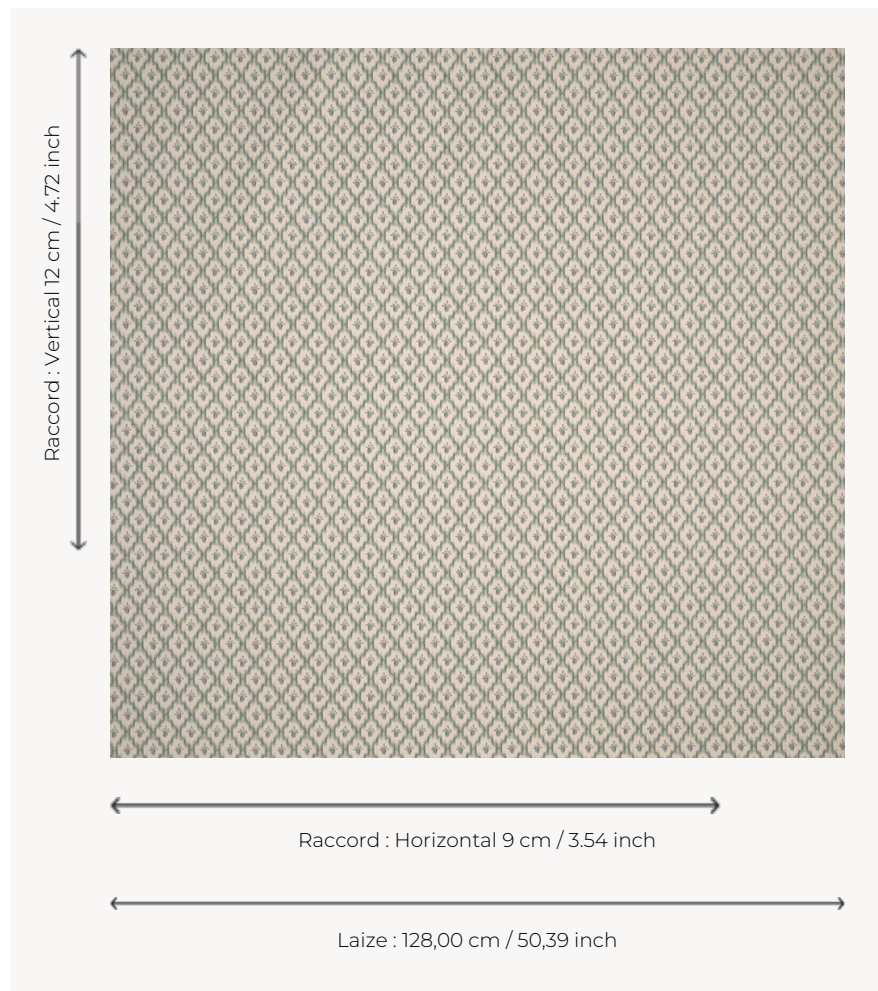


T0329001 QUADRILLE THORP

This charming Louis XVI design combines ikate diamonds and grape bunches, in the spirit of the naturalist movement of the second half of the 18th century.

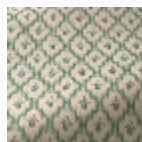
T0329001 - Opalin



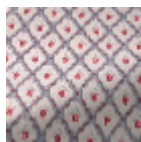
Thorp of London

| | |
|-------------------------|--|
| TYPE | Prints |
| TECHNIQUE | Screen printed by hand |
| USE | Normal use |
| MARTINDALE | - |
| SALES UNIT | Available per meter/yard |
| GROUND | TS003 - Bradley Sand |
| COMPOSITION | 100 % Cotton |
| NUMBER OF COLORS | 5 |
| COLORS | A-OPALINE 222 B-MISTY 292 C-SEVRES 206 D-ARTIC 312 E-OPALINE 222 |
| DESIGN WIDTH | 128 cm / 50,39 inch |
| REPEAT | H: 9 cm - 3,54 inch V: 12 cm - 4,72 inch Straight repeat |
| WEIGHT | 361 gr / ml |
| CARE | |
| INFORMATION | Hand screen printed |

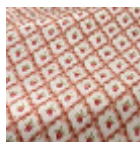
3 Colors



T0329001
Opalin



T0329002
Sterling



T0329003
Berlingot