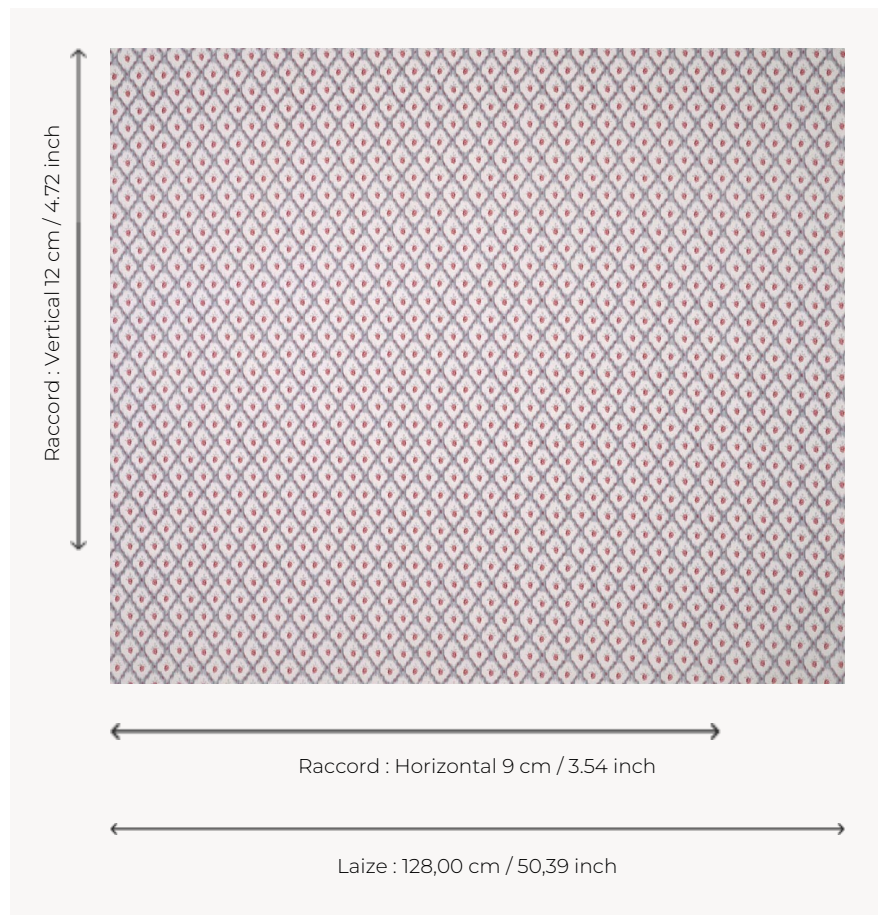


T0329002 QUADRILLE THORP

This charming Louis XVI design combines ikate diamonds and grape bunches, in the spirit of the naturalist movement of the second half of the 18th century.

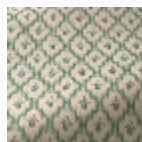
T0329002 - Sterling



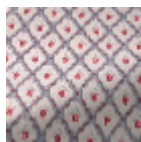
Thorp of London

TYPE	Prints
TECHNIQUE	Screen printed by hand
SALES UNIT	Available per meter/yard
GROUND	TS017 - Mary Natural
COMPOSITION	100 % Cotton
NUMBER OF COLORS	5
COLORS	A-RAIN 343 B-BERLINGOT 21 C-STERLING 224 D-STRAWBERRY 180 E-MOUSE 225
DESIGN WIDTH	128 cm / 50,39 inch
REPEAT	H: 9 cm - 3,54 inch V: 12 cm - 4,72 inch Straight repeat
WEIGHT	175 gr / ml
CARE	
INFORMATION	Hand screen printed

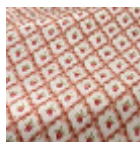
3 Colors



T0329001
Opalin



T0329002
Sterling



T0329003
Berlingot