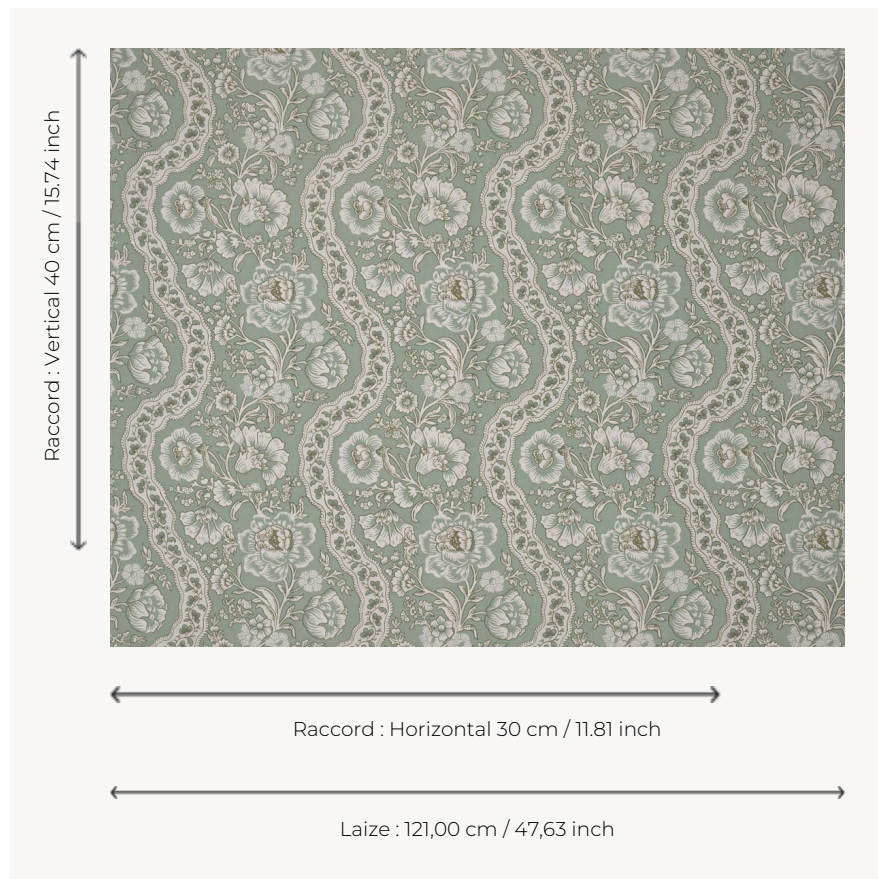


T0340001 ANTOINETTE

ANTOINETTE is based on a design printed on woodblock circa 1760-1770. Its sinuous flowering stems and undulating ribbons exalt countryside delights.

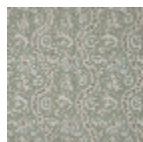
T0340001 - Sevres



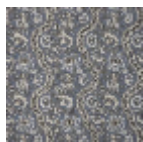
Thorp of London

| | |
|-------------------------|---|
| TYPE | Prints |
| TECHNIQUE | Screen printed by hand |
| SALES UNIT | Available per meter/yard |
| GROUND | TS017 - Mary Natural |
| COMPOSITION | 100 % Cotton |
| NUMBER OF COLORS | 2 |
| COLORS | A-THYME 213 B-SEVRES 206 |
| DESIGN WIDTH | 121 cm / 47,63 inch |
| REPEAT | H: 30 cm - 11,81 inch V: 40 cm - 15,74 inch Straight repeat |
| WEIGHT | 175 gr / ml |
| CARE | |
| INFORMATION | Hand screen printed |

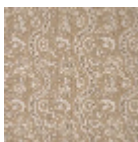
4 Colors



T0340001
Sevres



T0340002
Denim



T0340003
Chestnut



T0340004
Berlingot