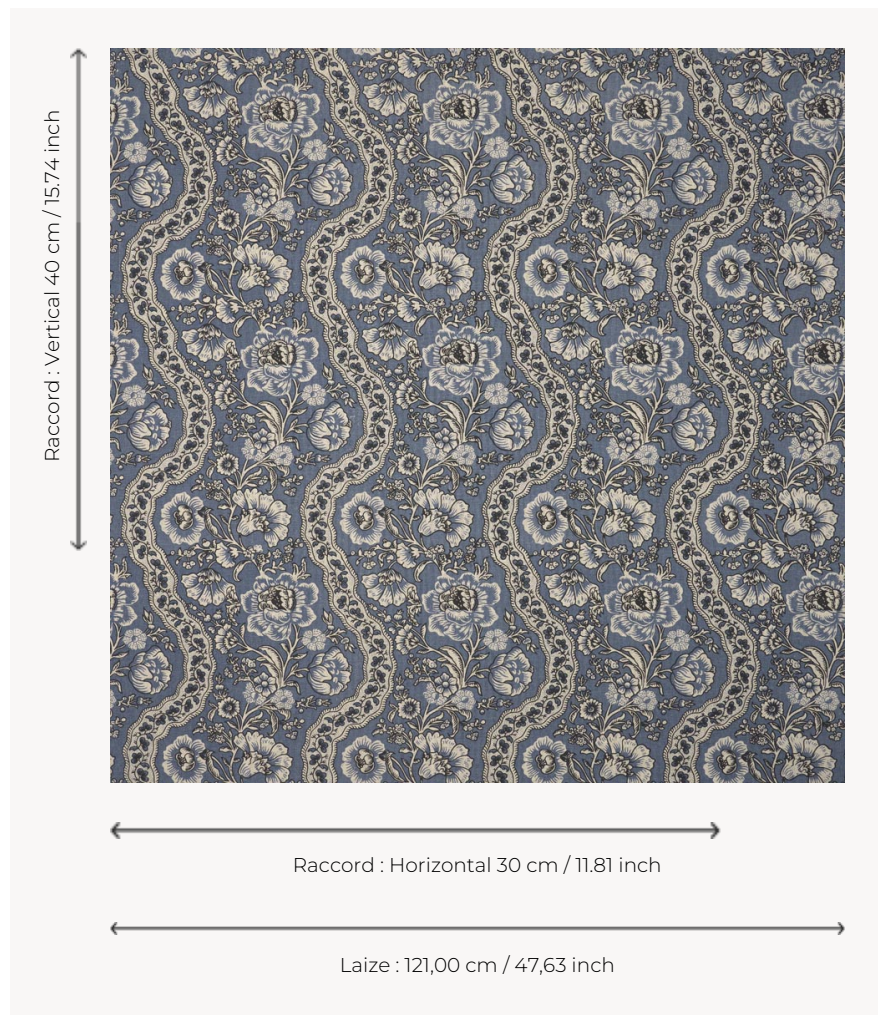


T0340002 ANTOINETTE

ANTOINETTE is based on a design printed on woodblock circa 1760-1770. Its sinuous flowering stems and undulating ribbons exalt countryside delights.

T0340002 - Denim



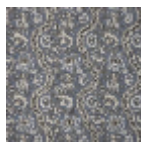
Thorp of London

TYPE	Prints
TECHNIQUE	Screen printed by hand
SALES UNIT	Available per meter/yard
GROUND	TS014 - Margaret Natural
COMPOSITION	60 % Cotton - 40 % Hemp
NUMBER OF COLORS	2
COLORS	A-CHARCOAL 187 B-DENIM 51
DESIGN WIDTH	121 cm / 47,63 inch
REPEAT	H: 30 cm - 11,81 inch V: 40 cm - 15,74 inch Straight repeat
WEIGHT	455 gr / ml
CARE	
INFORMATION	Hand screen printed

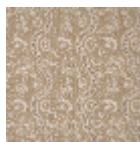
4 Colors



T0340001
Sevres



T0340002
Denim



T0340003
Chestnut



T0340004
Berlingot