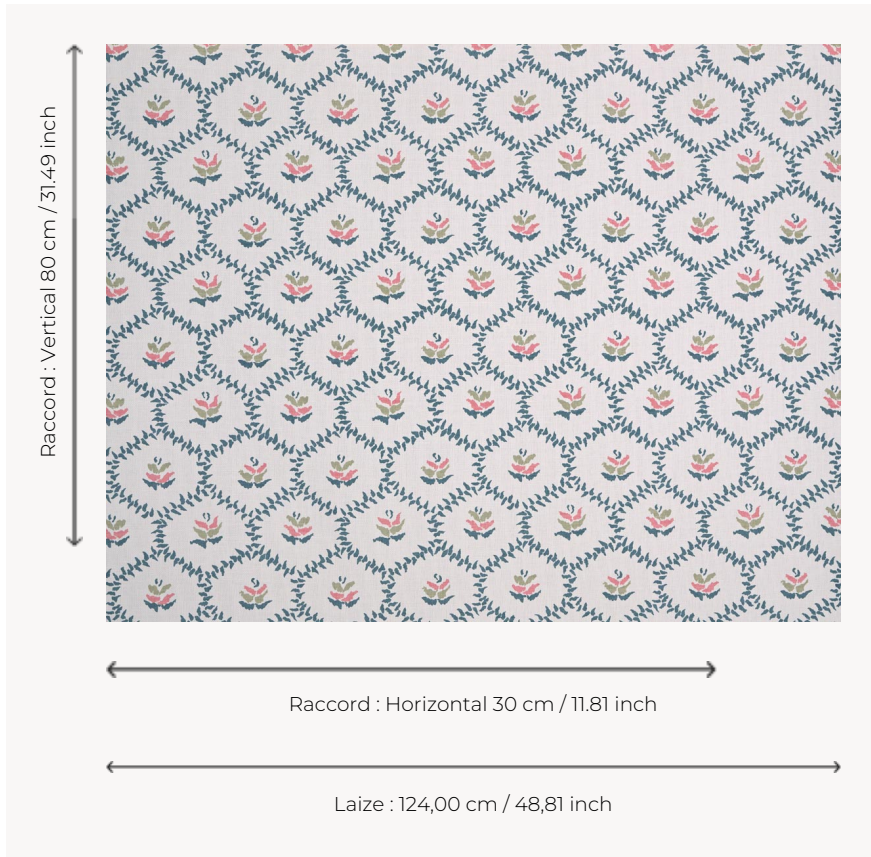


T0445001 CHLOE THORP

The delightful floral honeycomb pattern on a striped background of CHLOE THORP demonstrates the charm of simplicity.

T0445001 - Artic



Thorp of London

TYPE	Prints
TECHNIQUE	Screen printed by hand
SALES UNIT	Available per meter/yard
GROUND	TS009 - James Off White
COMPOSITION	55 % Cotton - 45 % Linen
NUMBER OF COLORS	3
COLORS	A-BERLINGOT 21 B-ROSEMARY 293 C-ARTIC 312
DESIGN WIDTH	124 cm / 48,81 inch
REPEAT	H: 30 cm - 11,81 inch V: 80 cm - 31,49 inch Straight repeat
WEIGHT	540 gr / ml
CARE	
INFORMATION	Hand screen printed

3 Colors



T0445001
Artic



T0445002
Dawn



T0445003
Duck