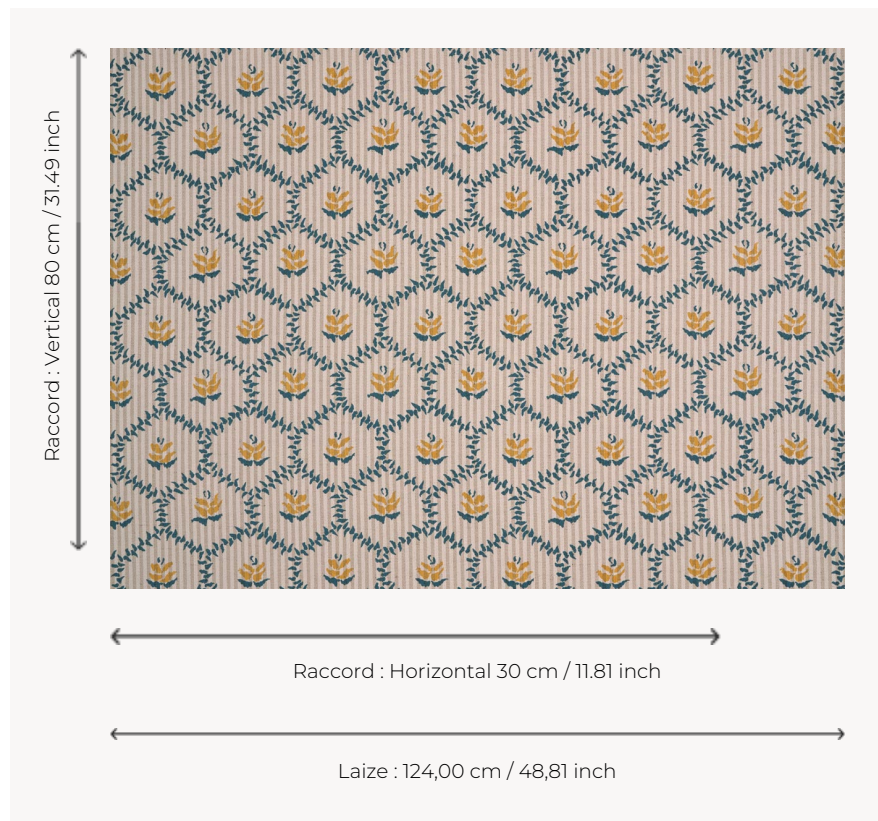


T0445003 CHLOE THORP

The delightful floral honeycomb pattern on a striped background of CHLOE THORP demonstrates the charm of simplicity.

T0445003 - Duck



Thorp of London

TYPE	Prints
TECHNIQUE	Screen printed by hand
SALES UNIT	Available per meter/yard
GROUND	TS019 - Stanley Natural
COMPOSITION	62 % Cotton - 38 % Jute
NUMBER OF COLORS	3
COLORS	A-MUSTARD 304 B-MUSTARD 304 C-DUCK 127
DESIGN WIDTH	124 cm / 48,81 inch
REPEAT	H: 30 cm - 11,81 inch V: 80 cm - 31,49 inch Straight repeat
WEIGHT	542 gr / ml
CARE	
INFORMATION	Hand screen printed

3 Colors



T0445001
Artic



T0445002
Dawn



T0445003
Duck