

## T0454001 SEGOLENE

This beautiful design reflects the spirit of the Indiennes imported in the 18th century by the English and French East India Companies.

### T0454001 - Porcelain



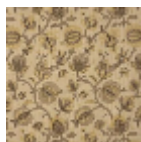
### Thorp of London

<b>TYPE</b>	Prints
<b>TECHNIQUE</b>	Screen printed by hand
<b>SALES UNIT</b>	Available per meter/yard
<b>GROUND</b>	TS001 - Andrew Natural
<b>COMPOSITION</b>	60 % Cotton - 40 % Jute
<b>NUMBER OF COLORS</b>	4
<b>COLORS</b>	A-// // B-AUBERGINE 129 C-PORCELAIN 361 D-ARMOR 81
<b>DESIGN WIDTH</b>	125 cm / 49,21 inch
<b>REPEAT</b>	H: 41 cm - 16,14 inch V: 77 cm - 30,31 inch Straight repeat
<b>WEIGHT</b>	542 gr / ml
<b>CARE</b>	
<b>INFORMATION</b>	Hand screen printed

## 3 Colors



T0454001  
Porcelain



T0454002  
Wheat



T0454003  
Calypso