

T0454002 SEGOLENE

This beautiful design reflects the spirit of the Indiennes imported in the 18th century by the English and French East India Companies.

T0454002 - Wheat



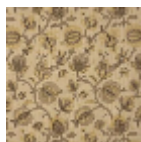
Thorp of London

TYPE	Prints
TECHNIQUE	Screen printed by hand
SALES UNIT	Available per meter/yard
GROUND	TS027 - Edward Natural
COMPOSITION	100 % Jute
NUMBER OF COLORS	4
COLORS	A-// // B-CHARCOAL 187 C-WHEAT 254 D-CHANTERELLE 161
DESIGN WIDTH	125 cm / 49,21 inch
REPEAT	H: 41 cm - 16,14 inch V: 77 cm - 30,31 inch Straight repeat
WEIGHT	914 gr / ml
CARE	
INFORMATION	Hand screen printed

3 Colors



T0454001
Porcelain



T0454002
Wheat



T0454003
Calypso