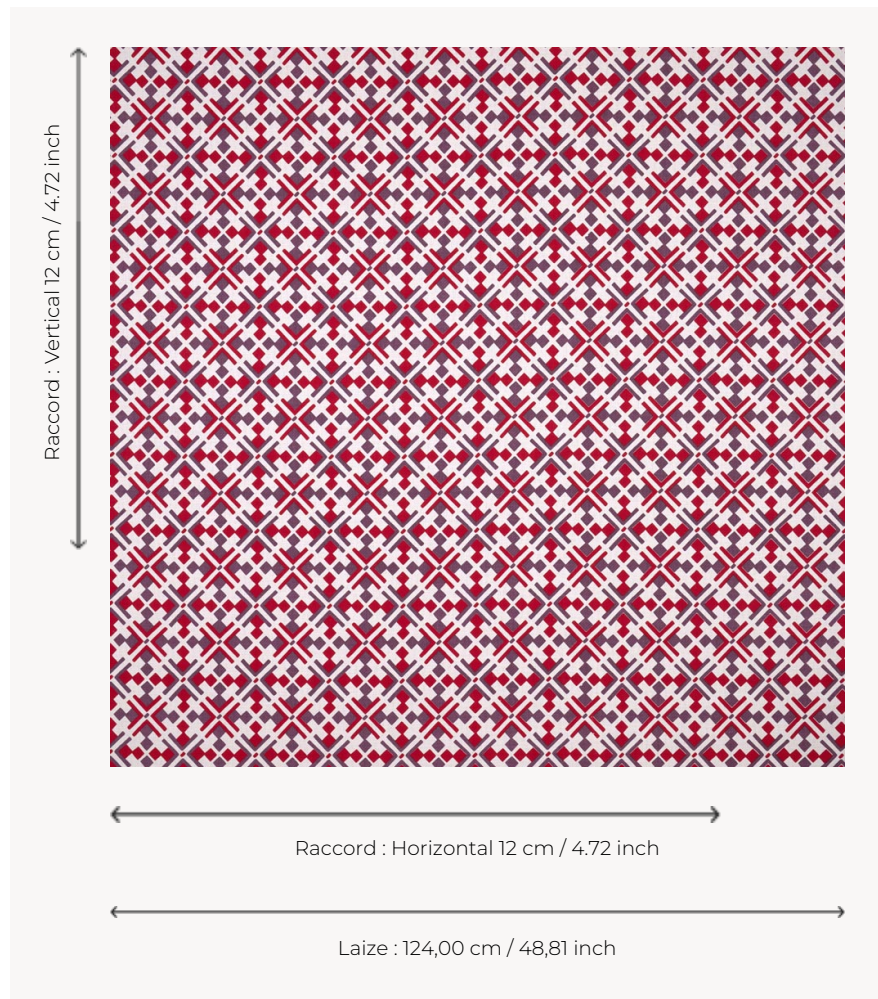


T0601001 LUNA

LUNA's modernist two-tone diamond pattern is inspired by the London style of the 60s and 70s.

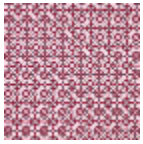
T0601001 - Petunia



Thorp of London

TYPE	Prints
TECHNIQUE	Screen printed by hand
SALES UNIT	Available per meter/yard
GROUND	TS004 - Douglas White
COMPOSITION	78 % Linen - 22 % Bamboo viscose
NUMBER OF COLORS	2
COLORS	A-POPPY 106 B-PETUNIA 130
DESIGN WIDTH	124 cm / 48,81 inch
REPEAT	H: 12 cm - 4,72 inch V: 12 cm - 4,72 inch Straight repeat
WEIGHT	436 gr / ml
CARE	
INFORMATION	Hand screen printed

3 Colors



T0601001
Petunia



T0601002
Saxe



T0601003
Charcoal