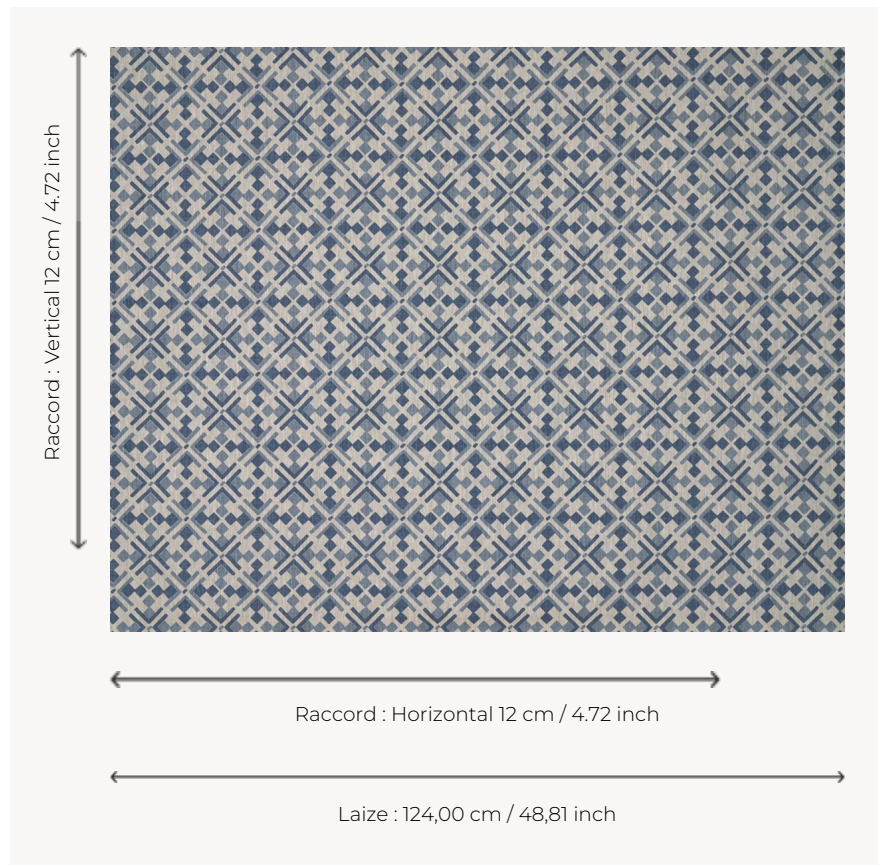


# T0601002 LUNA

LUNA's modernist two-tone diamond pattern is inspired by the London style of the 60s and 70s.

## T0601002 - Saxe



## Thorp of London

<b>TYPE</b>	Prints
<b>TECHNIQUE</b>	Screen printed by hand
<b>SALES UNIT</b>	Available per meter/yard
<b>GROUND</b>	TS008 - Harry Natural
<b>COMPOSITION</b>	100 % Linen
<b>NUMBER OF COLORS</b>	2
<b>COLORS</b>	A-CHINA 12 B-SAXE 33
<b>DESIGN WIDTH</b>	124 cm / 48,81 inch
<b>REPEAT</b>	H: 12 cm - 4,72 inch V: 12 cm - 4,72 inch Straight repeat
<b>WEIGHT</b>	345 gr / ml
<b>CARE</b>	
<b>INFORMATION</b>	Hand screen printed

## 3 Colors



T0601001  
Petunia



T0601002  
Saxe



T0601003  
Charcoal