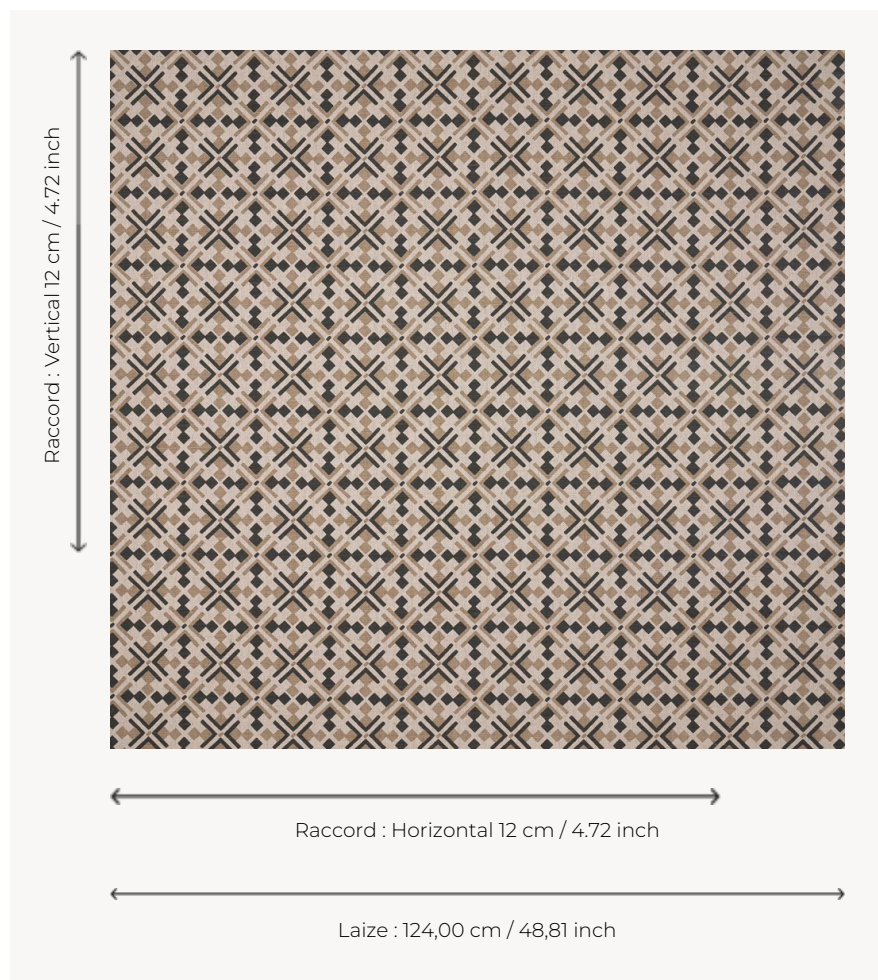


T0601003 LUNA

LUNA's modernist two-tone diamond pattern is inspired by the London style of the 60s and 70s.

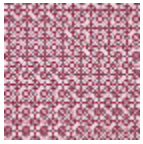
T0601003 - Charcoal



Thorp of London

TYPE	Prints
TECHNIQUE	Screen printed by hand
SALES UNIT	Available per meter/yard
GROUND	TS021 - Winston Natural
COMPOSITION	55 % Cotton - 45 % Jute
NUMBER OF COLORS	2
COLORS	A-CHARCOAL 187 B-PUTTY 93
DESIGN WIDTH	124 cm / 48,81 inch
REPEAT	H: 12 cm - 4,72 inch V: 12 cm - 4,72 inch Straight repeat
WEIGHT	449 gr / ml
CARE	
INFORMATION	Hand screen printed

3 Colors



T0601001
Petunia



T0601002
Saxe



T0601003
Charcoal