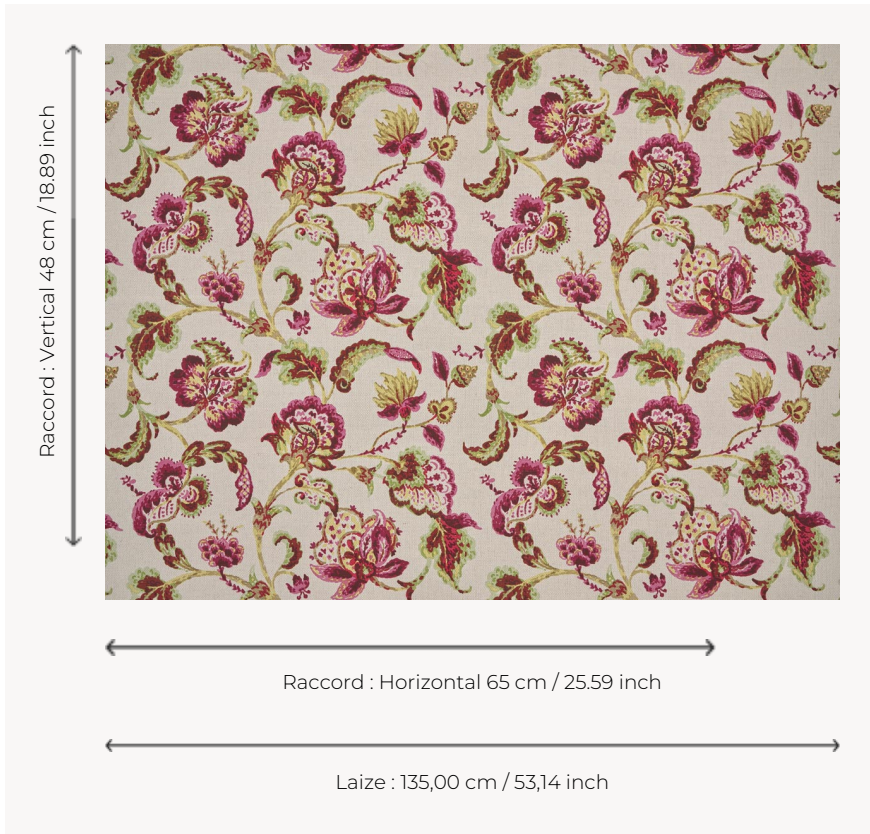


T0621001 GINA GARDEN

Inspired by 18th-century Indian embroidery, this print features a sinuous stem motif with imaginary and exotic flowers.

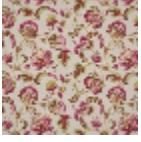
T0621001 - Corinthian



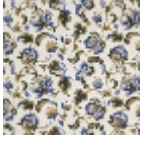
Thorp of London

TYPE	Prints
TECHNIQUE	Screen printed by hand
SALES UNIT	Available per meter/yard
GROUND	TS010 - James Natural
COMPOSITION	55 % Cotton - 45 % Linen
NUMBER OF COLORS	9
COLORS	A-CORINTHIAN 308 B-CHESTNUT 118 C-SAND 216 D-AZALEA 74 E-FUCHSIA 36 F-CELERY 61 G-WILDROSE 75 H-HARVEST 169 I-CONIFEROUS 326
DESIGN WIDTH	135 cm / 53,14 inch
REPEAT	H: 65 cm - 25,59 inch V: 48 cm - 18,89 inch Straight repeat
WEIGHT	540 gr / ml
CARE	
INFORMATION	Hand screen printed

2 Colors



T0621001
Corinthian



T0621002
Federal