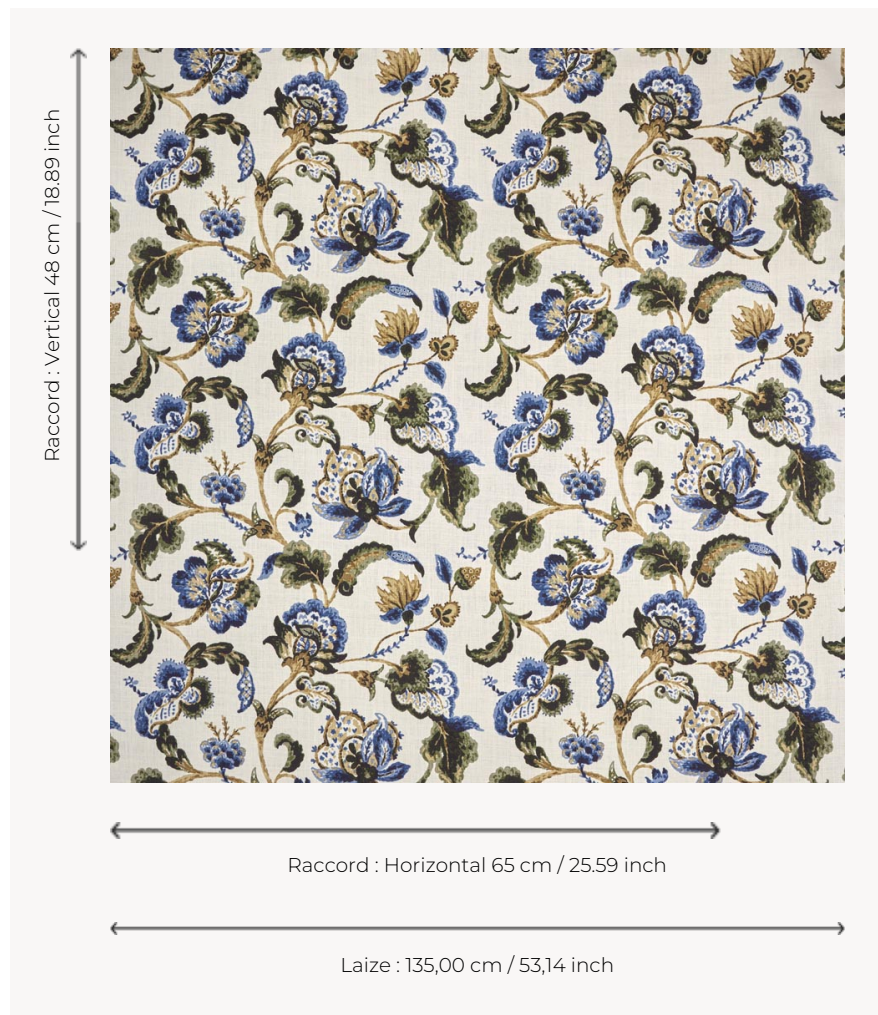


T0621002 GINA GARDEN

Inspired by 18th-century Indian embroidery, this print features a sinuous stem motif with imaginary and exotic flowers.

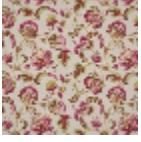
T0621002 - Federal



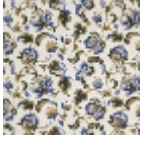
Thorp of London

TYPE	Prints
TECHNIQUE	Screen printed by hand
SALES UNIT	Available per meter/yard
GROUND	TS007 - George Off White
COMPOSITION	100 % Linen
NUMBER OF COLORS	9
COLORS	A-FEDERAL 89 B-HAZELNUT 165 C-CHESTNUT 118 D-CHINA 12 E-IVY 179 F-THYME 213 G-NIAGARA 17 H-SAND 216 I-SAGE 291
DESIGN WIDTH	135 cm / 53,14 inch
REPEAT	H: 65 cm - 25,59 inch V: 48 cm - 18,89 inch Straight repeat
WEIGHT	685 gr / ml
CARE	
INFORMATION	Hand screen printed

2 Colors



T0621001
Corinthian



T0621002
Federal