

## T0634002 SLOANE

Delightful cameo print evoking the charm of 19th-century English chintz.

### T0634002 - Foam



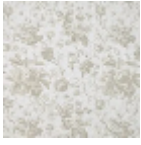
### Thorp of London

<b>TYPE</b>	Prints
<b>TECHNIQUE</b>	Screen printed by hand
<b>USE</b>	Moderate use
<b>MARTINDALE</b>	15.000 T
<b>SALES UNIT</b>	Available per meter/yard
<b>GROUND</b>	TS011 - John White
<b>COMPOSITION</b>	100 % Linen
<b>NUMBER OF COLORS</b>	4
<b>COLORS</b>	A-SWALLOW 349 B-FOAM 135 C-SNOW 351 D-///
<b>DESIGN WIDTH</b>	124 cm / 48,81 inch
<b>REPEAT</b>	H: 60 cm - 23,62 inch V: 61 cm - 24,01 inch Straight repeat
<b>WEIGHT</b>	308 gr / ml
<b>CARE</b>	
<b>INFORMATION</b>	Hand screen printed

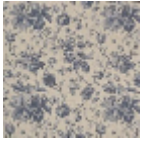
## 3 Colors



T0634001  
Armor



T0634002  
Foam



T0634003  
Saxe