

T0634003 SLOANE

Delightful cameo print evoking the charm of 19th-century English chintz.

T0634003 - Saxe



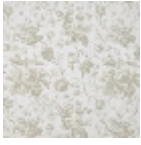
Thorp of London

| | |
|-------------------------|---|
| TYPE | Prints |
| TECHNIQUE | Screen printed by hand |
| SALES UNIT | Available per meter/yard |
| GROUND | TS012 - Kathleen Plain Natural |
| COMPOSITION | 70 % Cotton - 30 % Hemp |
| NUMBER OF COLORS | 4 |
| COLORS | A-SAXE 33 B-DENIM 51 C-ICECUBE 434 D-/// |
| DESIGN WIDTH | 124 cm / 48,81 inch |
| REPEAT | H: 60 cm - 23,62 inch V: 61 cm - 24,01 inch Straight repeat |
| WEIGHT | 549 gr / ml |
| CARE | |
| INFORMATION | Hand screen printed |

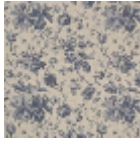
3 Colors



T0634001
Armor



T0634002
Foam



T0634003
Saxe