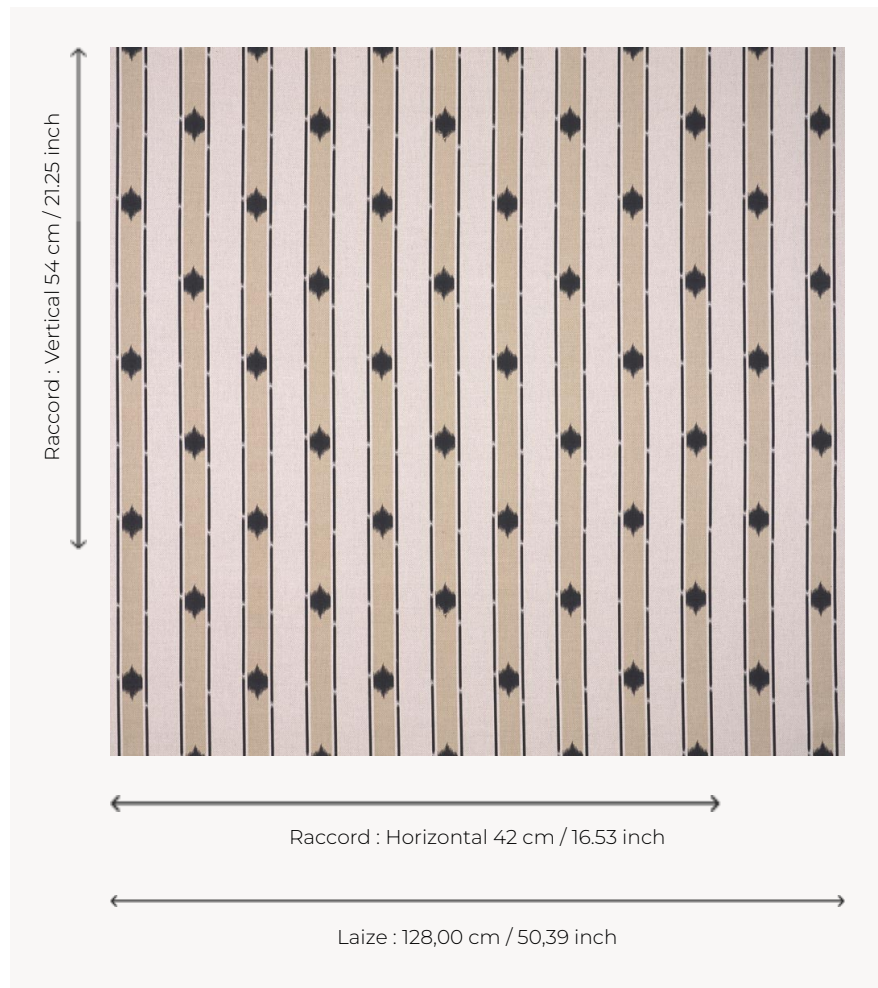


T0641003 STELLAR STRIPE

Delightful stripes reminiscent of the braids or striped woven fabrics of the late 18th century.

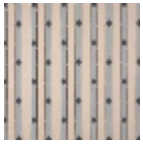
T0641003 - Marble



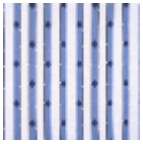
Thorp of London

TYPE	Prints
TECHNIQUE	Screen printed by hand
SALES UNIT	Available per meter/yard
GROUND	TS010 - James Natural
COMPOSITION	55 % Cotton - 45 % Linen
NUMBER OF COLORS	2
COLORS	A-BLACK 190 B-MARBLE 94
DESIGN WIDTH	128 cm / 50,39 inch
REPEAT	H: 42 cm - 16,53 inch V: 54 cm - 21,25 inch Straight repeat
WEIGHT	540 gr / ml
CARE	
INFORMATION	Hand screen printed

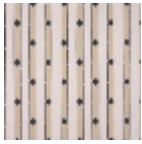
4 Colors



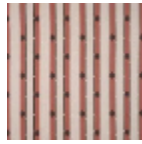
T0641001
Anvers



T0641002
Atlantic



T0641003
Marble



T0641004
Cameo