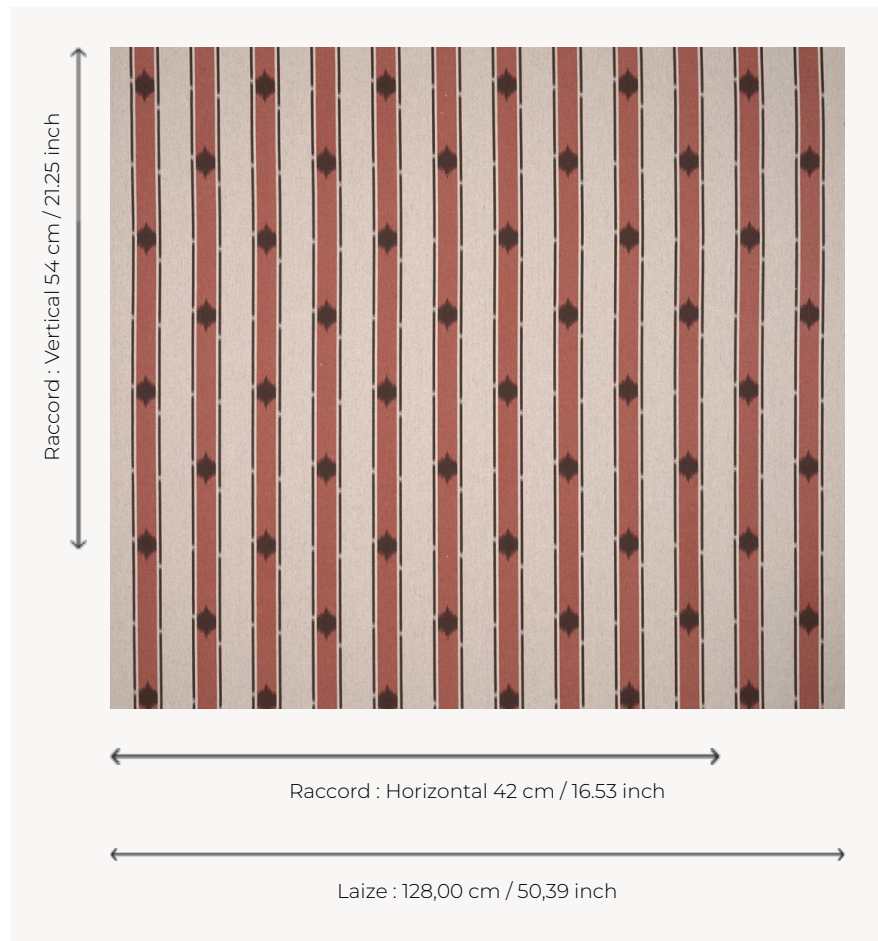


## T0641004 STELLAR STRIPE

Delightful stripes reminiscent of the braids or striped woven fabrics of the late 18th century.

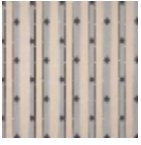
### T0641004 - Cameo



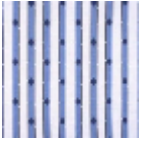
### Thorp of London

<b>TYPE</b>	Prints
<b>TECHNIQUE</b>	Screen printed by hand
<b>SALES UNIT</b>	Available per meter/yard
<b>GROUND</b>	TS031 - Kathleen Twill Natural
<b>COMPOSITION</b>	70 % Cotton - 30 % Hemp
<b>NUMBER OF COLORS</b>	2
<b>COLORS</b>	A-WALNUT 176 B-CAMEO 227
<b>DESIGN WIDTH</b>	128 cm / 50,39 inch
<b>REPEAT</b>	H: 42 cm - 16,53 inch V: 54 cm - 21,25 inch Straight repeat
<b>WEIGHT</b>	549 gr / ml
<b>CARE</b>	
<b>INFORMATION</b>	Hand screen printed

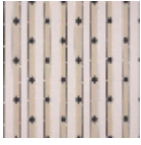
## 4 Colors



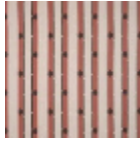
T0641001  
Anvers



T0641002  
Atlantic



T0641003  
Marble



T0641004  
Cameo