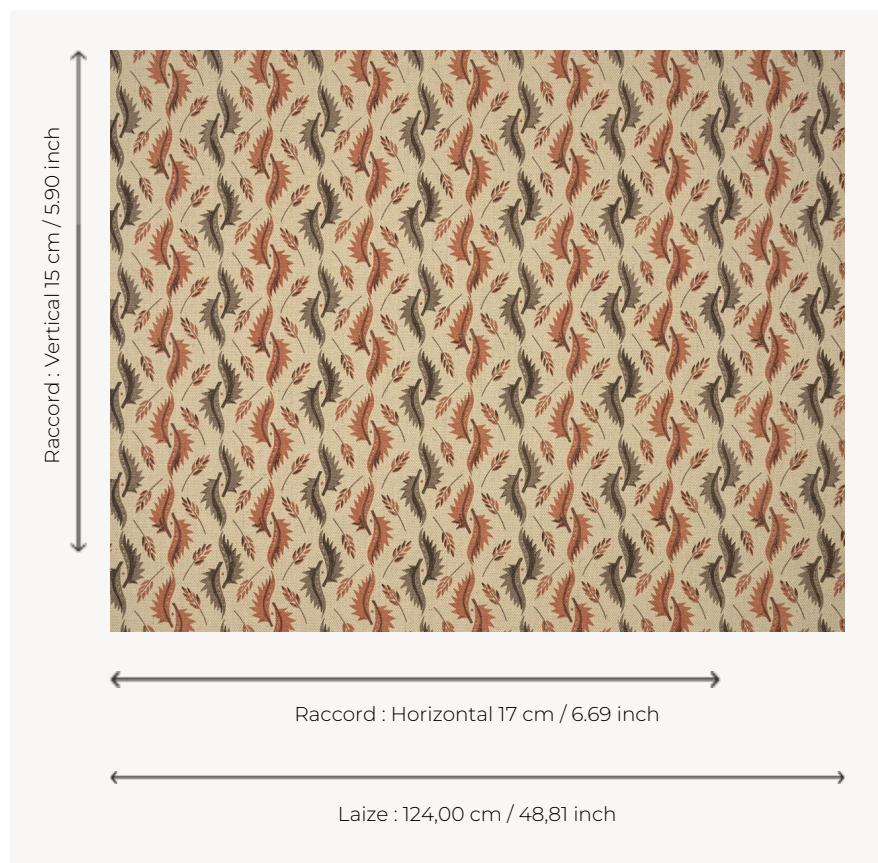


# T0642004 NINA

Stylized leaves in the Scandinavian spirit of the 50's.

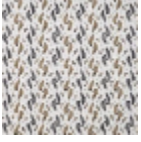
## T0642004 - Brick



## Thorp of London

|                         |   |
|-------------------------|---|
| <b>TYPE</b>             | Prints  |
| <b>TECHNIQUE</b>        | Screen printed by hand  |
| <b>SALES UNIT</b>       | Available per meter/yard  |
| <b>GROUND</b>           | TS028 - Henry Natural   |
| <b>COMPOSITION</b>      | 100 % Jute  |
| <b>NUMBER OF COLORS</b> | 3   |
| <b>COLORS</b>           | A-TAUPE 10<br>B-BRONZE 171<br>C-BRICK 18                        |
| <b>DESIGN WIDTH</b>     | 124 cm / 48,81 inch   |
| <b>REPEAT</b>           | H: 17 cm - 6,69 inch<br>V: 15 cm - 5,90 inch<br>Straight repeat |
| <b>WEIGHT</b>           | -   |
| <b>CARE</b>             |   |
| <b>INFORMATION</b>      | Hand screen printed   |

## 4 Colors



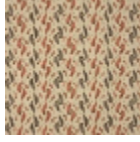
T0642001  
Lead



T0642002  
Raspberry



T0642003  
China



T0642004  
Brick