

## T0669002 MADRAS THORP

A reproduction of a woodblock-printed canvas from the last quarter of the 18th century, MADRAS THORP is representative of the period's taste for the exotic.

### T0669002 - Chamois



Raccord : Vertical 91 cm / 35.82 inch

Raccord : Horizontal 61 cm / 24.01 inch

Laize : 124,00 cm / 48,81 inch

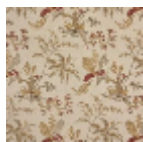
### Thorp of London

<b>TYPE</b>	Prints
<b>TECHNIQUE</b>	Screen printed by hand
<b>SALES UNIT</b>	Available per meter/yard
<b>GROUND</b>	TS021 - Winston Natural
<b>COMPOSITION</b>	55 % Cotton - 45 % Jute
<b>NUMBER OF COLORS</b>	7
<b>COLORS</b>	A-THATCH 14 B-SQUASH 97 C-CHAMOIS 64 D-PUTTY 93 E-BURNET 259 F-HOPS 63 G-MARBLE 94
<b>DESIGN WIDTH</b>	124 cm / 48,81 inch
<b>REPEAT</b>	H: 61 cm - 24,01 inch V: 91 cm - 35,82 inch Straight repeat
<b>WEIGHT</b>	449 gr / ml
<b>CARE</b>	
<b>INFORMATION</b>	Hand screen printed

## 2 Colors



T0669001  
Berlingot



T0669002  
Chamois