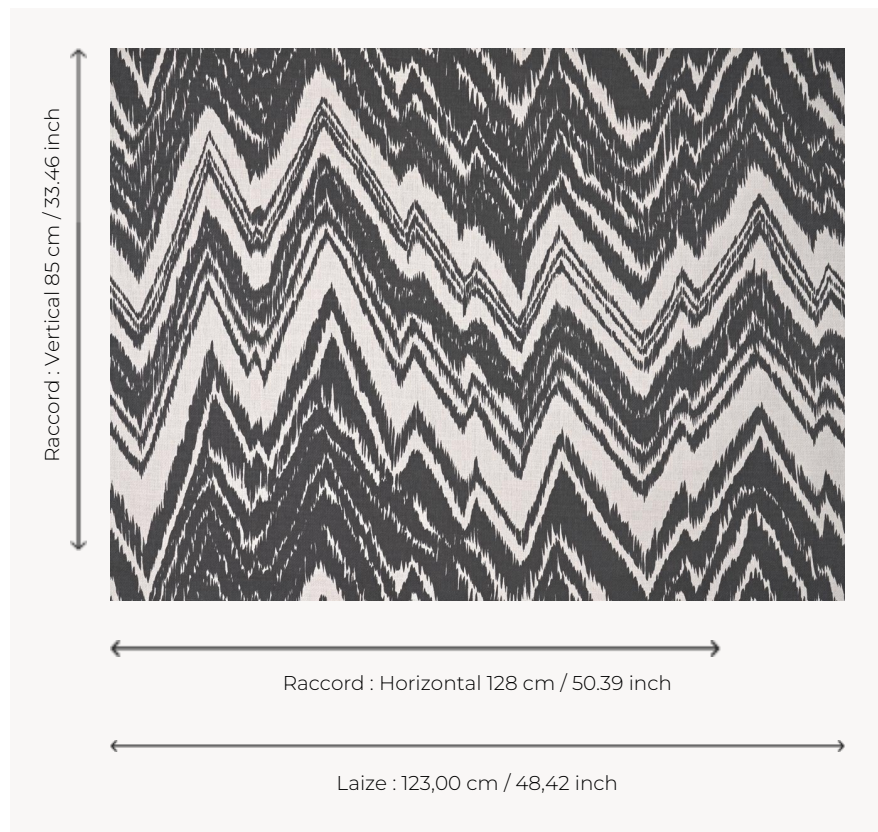


T0691001 FLAME LARGE THORP

A large, irregular monochrome chevron, FLAME LARGE THORP delivers a contemporary version of the Hungarian stitch that was fashionable in the 17th century.

T0691001 - Charcoal



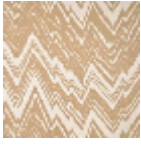
Thorp of London

TYPE	Prints
TECHNIQUE	Screen printed by hand
SALES UNIT	Available per meter/yard
GROUND	TS004 - Douglas White
COMPOSITION	78 % Linen - 22 % Bamboo viscose
NUMBER OF COLORS	1
COLORS	A-CHARCOAL 187
DESIGN WIDTH	123 cm / 48,42 inch
REPEAT	H: 128 cm - 50,39 inch V: 85 cm - 33,46 inch Straight repeat
WEIGHT	436 gr / ml
CARE	
INFORMATION	Hand screen printed

3 Colors



T0691001
Charcoal



T0691002
Chestnut



T0691003
Saxe