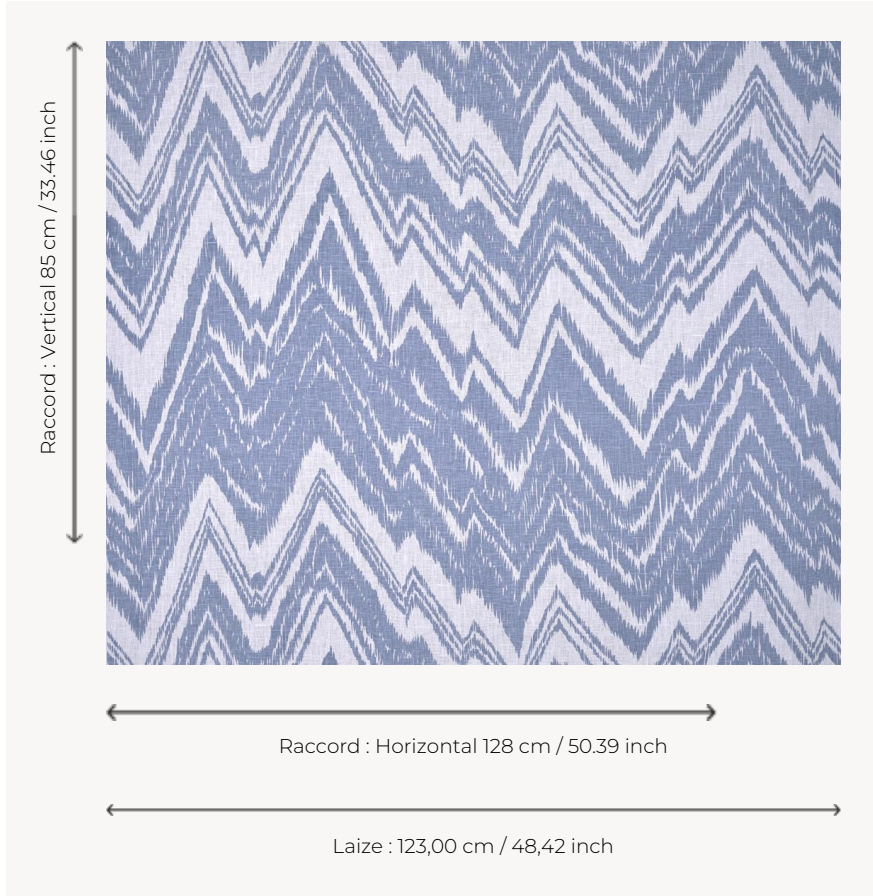


## T0691003 FLAME LARGE THORP

A large, irregular monochrome chevron, FLAME LARGE THORP delivers a contemporary version of the Hungarian stitch that was fashionable in the 17th century.

### T0691003 - Saxe



### Thorp of London

|                         |  |
|-------------------------|--|
| <b>TYPE</b>             | Prints   |
| <b>TECHNIQUE</b>        | Screen printed by hand   |
| <b>USE</b>              | Moderate use   |
| <b>MARTINDALE</b>       | 15.000 T   |
| <b>SALES UNIT</b>       | Available per meter/yard   |
| <b>GROUND</b>           | TS011 - John White   |
| <b>COMPOSITION</b>      | 100 % Linen  |
| <b>NUMBER OF COLORS</b> | 1  |
| <b>COLORS</b>           | A-SAXE 33  |
| <b>DESIGN WIDTH</b>     | 123 cm / 48,42 inch  |
| <b>REPEAT</b>           | H: 128 cm - 50,39 inch<br>V: 85 cm - 33,46 inch<br>Straight repeat |
| <b>WEIGHT</b>           | 308 gr / ml  |
| <b>CARE</b>             |  |
| <b>INFORMATION</b>      | Hand screen printed  |

## 3 Colors



T0691001  
Charcoal



T0691002  
Chestnut



T0691003  
Saxe