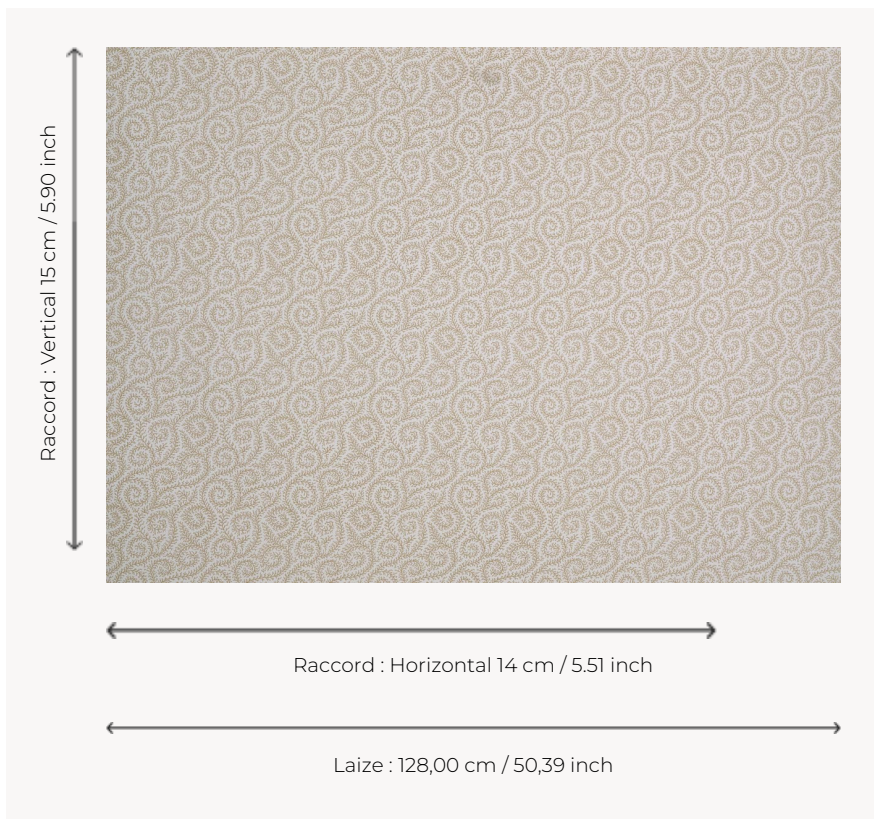


T0692002 DOWNTOWN IVY

T0692002 - Chestnut

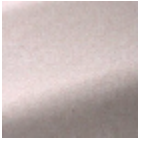


Thorp of London

TYPE	Prints
TECHNIQUE	Screen printed by hand
USE	Normal use
MARTINDALE	15.000 T
SALES UNIT	Available per meter/yard
GROUND	TS013 - Lucy Off White
COMPOSITION	100 % Cotton
NUMBER OF COLORS	1
COLORS	A-CHESTNUT 118
DESIGN WIDTH	128 cm / 50,39 inch
REPEAT	H: 14 cm - 5,51 inch V: 15 cm - 5,90 inch Straight repeat
WEIGHT	370 gr / ml
CARE	

INFORMATION Hand screen printed

4 Colors



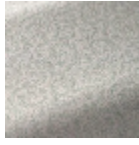
T0692001
Tearose



T0692002
Chestnut



T0692003
Misty



T0692004
Medici