


BP302002 WALLPAPER CANTON

A stunning, polychrome, Chinese-style wallpaper inspired by the works of Pillement, most likely printed at the Réveillon factory after 1770. It depicts two Chinese scenes in staggered rows on a finely speckled background. It was presumably coordinated with a printed cloth from the Oberkampf factory at Jouy-en-Josas. The original document is kept at the Toile de Jouy Museum.

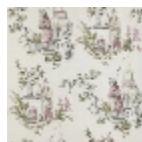
BP302002 - Bleu



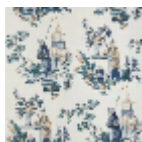
Braquenié

| | |
|-------------------------|---|
| TYPE | Small width printed wallpapers |
| SALES UNIT | Available per roll of 10,05 mts |
| BACKING | NON WOVEN |
| COMPOSITION | - |
| WIDTH | 68 cm / 26,77 inch |
| REPEAT | V: 68 cm - 26,77 inch Straight repeat |
| WEIGHT | 151 gr / m ² |
| CARE |  |
| TRIMMING | Trimmed |
| HANGING/REMOVING | Paste the wall Strippable |
| CERTIFICATIONS | EUROCLASS B-s1,d0 |
| NOTES | Hand screen printed |

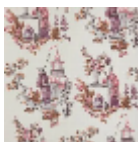
4 Colors



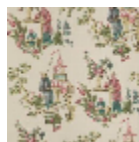
BP302001
Parme



BP302002
Bleu



BP302003
Rose



BP302004
Jaune