


## BP302003 WALLPAPER CANTON

A stunning, polychrome, Chinese-style wallpaper inspired by the works of Pillement, most likely printed at the Réveillon factory after 1770. It depicts two Chinese scenes in staggered rows on a finely speckled background. It was presumably coordinated with a printed cloth from the Oberkampf factory at Jouy-en-Josas. The original document is kept at the Toile de Jouy Museum.

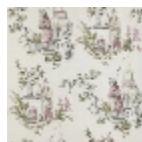
### BP302003 - Rose



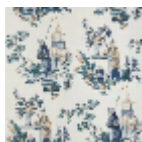
### Braquenié

<b>TYPE</b>	Small width printed wallpapers
<b>SALES UNIT</b>	Available per roll of 10,05 mts
<b>BACKING</b>	NON WOVEN
<b>COMPOSITION</b>	-
<b>WIDTH</b>	68 cm / 26,77 inch
<b>REPEAT</b>	V: 68 cm - 26,77 inch Straight repeat
<b>WEIGHT</b>	151 gr / m <sup>2</sup>
<b>CARE</b>	
<b>TRIMMING</b>	Trimmed
<b>HANGING/REMOVING</b>	Paste the wall Strippable
<b>CERTIFICATIONS</b>	EUROCLASS B-s1,d0
<b>NOTES</b>	Hand screen printed

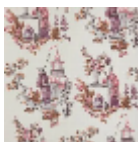
## 4 Colors



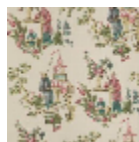
BP302001  
Parme



BP302002  
Bleu



BP302003  
Rose



BP302004  
Jaune