

## BP302004 WALLPAPER CANTON

A stunning, polychrome, Chinese-style wallpaper inspired by the works of Pillement, most likely printed at the Réveillon factory after 1770. It depicts two Chinese scenes in staggered rows on a finely speckled background. It was presumably coordinated with a printed cloth from the Oberkampf factory at Jouy-en-Josas. The original document is kept at the Toile de Jouy Museum.

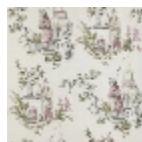
### BP302004 - Jaune



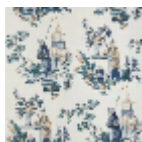
### Braquenié

|                         |   |
|-------------------------|---|
| <b>TYPE</b>             | Small width printed wallpapers  |
| <b>SALES UNIT</b>       | Available per roll of 10,05 mts   |
| <b>BACKING</b>          | NON WOVEN   |
| <b>COMPOSITION</b>      | -   |
| <b>WIDTH</b>            | 68 cm / 26,77 inch  |
| <b>REPEAT</b>           | V: 68 cm - 26,77 inch<br>Straight repeat  |
| <b>WEIGHT</b>           | 151 gr / m <sup>2</sup>   |
| <b>CARE</b>             |  |
| <b>TRIMMING</b>         | Trimmed   |
| <b>HANGING/REMOVING</b> | Paste the wall<br>Strippable  |
| <b>CERTIFICATIONS</b>   | EUROCLASS B-s1,d0   |
| <b>NOTES</b>            | Hand screen printed   |

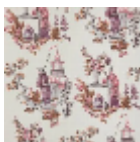
## 4 Colors



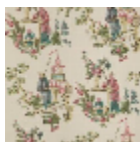
BP302001  
Parme



BP302002  
Bleu



BP302003  
Rose



BP302004  
Jaune