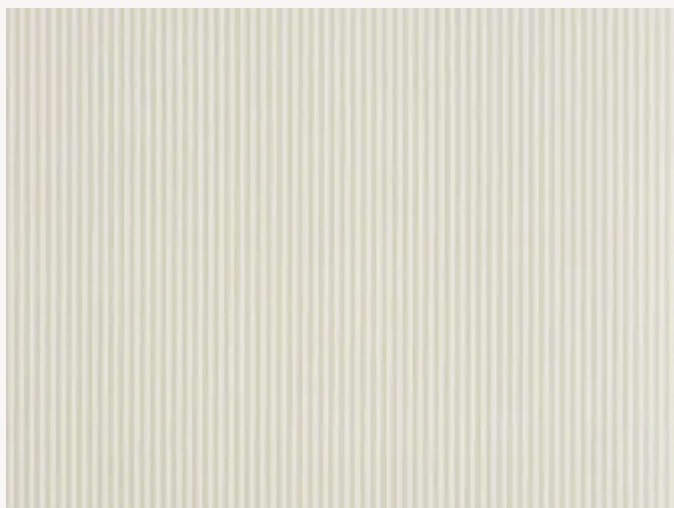


## BP327002 LES OMBRELLES RAYURE

LES OMBRELLES is derived from Pillement-inspired models in the Maison Pierre Frey archive, which date from the 19th century. Here, the striped background is once again used to match the design (BP326). Traditional cylindrical print.

### BP327002 - Lin




Raccord : Horizontal 1 cm / inch



Laize : 68,00 cm / 26,77 inch

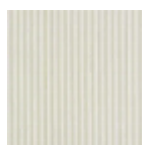
### Braquenié

<b>TYPE</b>	Small width printed wallpapers
<b>SALES UNIT</b>	Available per roll of 10,05 mts
<b>BACKING</b>	NON WOVEN
<b>COMPOSITION</b>	-
<b>WIDTH</b>	68 cm / 26,77 inch
<b>REPEAT</b>	H: 1 cm - Free match
<b>WEIGHT</b>	190 gr / m <sup>2</sup>
<b>CARE</b>	
<b>TRIMMING</b>	Trimmed
<b>HANGING/REMOVING</b>	Paste the wall Strippable
<b>CERTIFICATIONS</b>	EUROCLASS B-s1,d0 ASTM E84 Class A
<b>NOTES</b>	Good lightfastness Traditional printing technique

### 3 Colors



BP327001  
Bleu



BP327002  
Lin



BP327003  
Craie