

## BP332002 KONOTORI

KONOTORI reflects a late 19th-century Japanese motif preserved in the archives of la Maison Pierre Frey. Printed wallpaper on silk SHIVA BP334. Matching fabric B7617.

### BP332002 - Vert



### Braquenié

<b>TYPE</b>	Wide width printed wallpapers - Paperbacked fabrics
<b>SALES UNIT</b>	Available per meter/yard
<b>BACKING</b>	NON WOVEN
<b>COMPOSITION</b>	100 % Silk
<b>WIDTH</b>	130 cm / 51,18 inch
<b>REPEAT</b>	H: 65 cm - 25,00 inch V: 62 cm - 24,40 inch Straight repeat
<b>WEIGHT</b>	194 gr / m <sup>2</sup>
<b>CARE</b>	
<b>TRIMMING</b>	Trimmed
<b>HANGING/REMOVING</b>	Paste the wall Strippable
<b>CERTIFICATIONS</b>	EUROCLASS B-s1,d0 ASTM E84 Class A
<b>INFORMATION</b>	Panel effect Inherent irregularities from the natural fiber

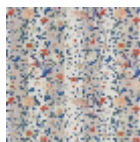
## 3 Colors



BP332001  
Rose



BP332002  
Vert



BP332003  
Bleu